

# INSEME



2022  
*December*

*Sigillo*



*Stradivari*



*Neutron*



*Sound System*



*Vanhalen*



*Sharpe*

*Secretariat*



*Mantra*



*King Red-P*



*Distefano*



# HOW TO READ PROOFS

TPI Total Performance Index	NM\$ Net Merit Dollars	CM\$ Cheese Merit Dollars	GM\$ Grazing Merit Dollars	FM\$ Fluid Merit Dollars
46% Production traits	<b>43% Production traits</b>	50% Production traits	38% Production traits	45% Production traits
28% Health traits	<b>41% Health traits</b>	37% Health traits	48% Health traits	39% Health traits
26% Type traits	<b>16% Type traits</b>	13% Type traits	14% Type traits	16% Type traits

- PTA** = Predicted Transmitting Ability PTA is the predicted difference between a parent animal's offspring and the average, due to the genes transmitted from the parent. Each PTA is given in the units used to measure the trait. The PTA for milk is reported in pounds, the PTA for productive life is reported in months.
- PTAM** = Predicted Transmitting Ability Milk production in pounds, reflecting the expected milk production of future mature daughters.
- PTAF** = Predicted Transmitting Ability Fat pounds, reflecting the expected butterfat production of mature daughters
- PTAF%** = Predicted Transmitting Ability Fat %, indicates the bull's genetic variance for transmitting fat and being positive or negative.
- PTAP** = Predicted Transmitting Ability Protein production in pounds reflecting the expected protein production of mature daughters.
- PTAP%** = Predicted Transmitting Ability Protein %, indicates the bull's genetic variance for transmitting protein and being positive or negative.
- PL** = Productive Life, gives a measure of the number of productive months, lifetime you can expect from a bull's daughters
- LIV** = Cow Liveability, measure of a cow's ability to remain alive while in the milking herd.
- SCS** = Somatic Cell Score, is used to improve mastitis resistance. Bulls with low a PTA for SCS (less than 3.00) are expected to have daughters with lower mastitis than bulls with high PTA for SCS (greater than 3.50)
- DPR** = Daughter Pregnancy Rate, is defined as the percentage of cows that become pregnant during each 21 day period. A DPR of '1.0' implies that daughters from this bull are 1% more likely to become pregnant during that estrus cycle than a bull with an evaluation of zero. Each increase of 1% in PTA DPR equals a decrease of 4 days in PTA days open
- HCR** = Heifer Conception Rate, a virgin heifers ability to conceive. Defined as a percentage of inseminated heifers that become pregnant each service. A HCR of 1.0 implies that daughters of this bull are 1% more likely to become pregnant as a heifer than daughters of a bull with an evaluation of 0.0

- CCR** = Cow Conception Rate, a lactating cows ability to conceive. Defined as a percentage of inseminated cows that become pregnant each service. A HCR of 1.0 implies that daughters of this bull are 1% more likely to become pregnant as a cow than daughters of a bull with an evaluation of 0.0.
- BCS** = Body Condition Score, reflects the animal's energy balance status in which research has clearly shown an association with improved female fertility, longevity and disease resistance.
- SCE** = Sire Calving Ease, the percentage of calving difficulties in first lactation animals. The average percentage difficult births is approximately 2.2%. in general, bulls with a SCE of 2.2% or less are considered "calving ease" bulls that are fine to use on heifers and smaller cows.
- DCE** = Daughter Calving Ease, like SCE, DCE is a measurement of the tendency of calves from a particular animal to be born easy (average 2.3%). Daughters of bulls with high DCE numbers would be expected to have a more difficult time giving birth than daughters of bulls with lower DCE numbers. DCE is evaluated on the same scale as SCE.
- SSB** = Sire Stillbirth, the percentage of a bull's offspring that are born dead to first lactation animals.
- DSB** = Daughter Stillbirth, is expressed as a percent stillbirth, where stillborn calves are those scored as dead at birth or born alive but died within 48 hours of birth. The average is 5.3%
- FE** = Feed Efficiency, is the net profit a farmer receives from an increase in production  $FE = (\$0.0008 \times PTAM) + (\$1.55 \times PTAF) + (\$1.73 \times PTAP) + (\$0.11 \times \text{Feed Saved})$
- FI** = Fertility Index, combines several reproductive components ( DPR, CCR, HCR and Early First Calving) in to one overall index.  $FI = (0.7 \times DPR) + (0.1 \times HCR) + (0.1 \times CCR) + (0.1 \times EFC)$
- PTAT** = Predicted Transmitting Ability for Type, is an estimate of the genetic superiority for conformation that bull will transmit to its offspring. This is directly correlated with the final score of the bull's daughters, not the linear traits.
- UDC** = Udder Composite Index, is an index based on ability for udder improvement. Udder composite includes six linear traits and the weighting for each trait's contribution to higher udder scores.
- FLC** = Foot and Leg Composite Index, is a measure of a bull's ability for foot and leg improvement.



A2



Balanced Bull



High milk production



KBB



GTPI

High Gtpi bulls



# GPFT TOP LIST

ID number	Name	A2A2	KBB	GPFT	IES €	Milk	Fat %	Fat Kg	Prot. %	Prot. Kg	SCS	SCE	PL	DPR	Type	ICM	IAP
IT001991441926	KING RED P	A2A2	AA	4888	1428	1505	0,09	67	0,17	74	110	116	119	113	1,54	2,19	3,41
IT004992438666	ARES	A1A2	AB	4799	1264	1770	0,00	68	0,23	90	111	104	115	110	0,79	1,76	-0,19
IT004992215987	AVON	A2A2	AA	4636	1248	1191	0,33	86	0,18	63	108	106	117	113	1,04	2,22	0,26
IT004992425480	SALUZZO	A2A2	AA	4630	1203	1306	0,40	98	0,33	85	110	115	110	106	0,56	0,73	1,56
IT061991006903	MANTRA	A1A2	BB	4583	1021	1238	0,35	86	0,31	80	106	96	112	103	1,99	3,20	0,87
IT103990033871	BLANCO	A1A2	AB	4544	1022	1252	0,43	99	0,21	72	112	100	112	102	2,14	3,13	1,36
IT019992239603	FABIUS	A1A1	BB	4508	1148	1039	0,68	113	0,33	74	107	103	114	107	0,69	1,33	-1,30
IT001991454452	ERIK P	A1A1	AB	4464	1102	650	0,45	77	0,32	63	107	103	113	110	1,35	1,97	1,66
IT034991275895	SEIKO	A1A2	BB	4439	994	1909	-0,02	70	0,20	94	110	96	111	100	2,02	1,80	0,69
IT024990682547	ELETTRO	A1A2	BB	4435	1068	550	0,57	89	0,29	55	111	103	113	109	1,36	2,40	0,59
IT034991319931	VALE-T	A2A2	AB	4433	985	1023	0,26	66	0,22	60	112	101	114	106	1,71	3,05	1,57
IT017992526791	SUPERFAST	A1A1	BE	4424	968	1213	0,29	81	0,29	76	106	99	109	105	1,56	2,03	0,97
IT001991277781	DISTEFANO	A2A2	AA	4422	1036	1537	0,31	89	0,17	71	109	110	114	103	1,70	2,91	0,73
IT016990900821	TIALOCO	A1A2	BB	4418	1179	1327	-0,02	43	0,12	60	116	113	119	110	1,56	2,06	-0,18
IT017992639133	LUDWIG	A2A2	BB	4416	1092	1359	0,16	63	0,21	71	113	107	114	104	1,27	1,71	2,43
IT028990476890	KYRIOS RF	A1A2	AB	4402	1080	1434	-0,19	34	0,05	58	114	110	117	109	1,62	2,59	2,35
IT017992167089	STRADIVARI	A1A1	BB	4399	958	1094	0,19	62	0,28	71	104	100	108	108	1,56	2,62	1,50
IT001991379357	SONIK	A2A2	AB	4376	970	1304	0,35	86	0,22	73	106	97	112	104	2,21	2,80	0,87
IT019992032586	DESICA	A1A2	BB	4361	1235	336	0,47	64	0,29	46	112	112	120	113	0,80	1,89	-0,05
IT020991496723	PASOLINI	A2A2	AB	4349	896	1741	-0,29	33	0,21	84	106	107	104	108	1,72	1,52	2,38
IT001991424870	MAKUMBA	A2A2	AB	4340	1181	1675	0,40	112	0,21	85	106	112	113	103	0,18	0,57	0,34
IT001991454481	ATHOS RED	A1A2	AA	4336	1166	1603	0,02	59	0,01	57	112	115	118	106	1,20	2,19	3,69
IT019991894420	CARLOMAGNO	A1A2	BE	4334	982	1539	0,10	68	0,25	86	107	101	112	103	1,19	1,10	-0,64
IT014990196057	LILIUM	A1A2	AB	4281	1069	1742	0,00	63	0,25	88	109	101	112	102	1,06	0,80	0,98
IT098990685193	TELESFORO	A1A2	BE	4254	844	1178	0,14	59	0,25	72	97	102	105	110	1,46	2,22	0,03
IT017992074001	MACCHIAVELLI	A2A2	AB	4247	1114	1869	-0,05	63	0,12	78	111	111	116	102	0,81	1,48	1,13
IT098990800801	SPRINTER	A2A2	BB	4224	1095	1492	0,11	65	0,08	61	106	105	119	106	1,43	2,10	1,07
IT019991894402	ROSSINI	A1A2	AA	4172	807	1120	0,13	52	0,29	72	109	109	108	102	1,79	2,65	0,07
IT034991251191	PORTOFINO	A1A2	BB	4148	773	1789	0,02	67	0,18	81	105	101	106	98	1,89	2,89	1,12
IT098990684345	EMERITO	A1A2	AE	4139	829	2041	-0,08	65	0,13	83	103	98	106	104	1,54	1,61	-0,11
IT019991894454	GHIBERTI	A2A2	AA	4136	787	988	0,44	86	0,25	65	111	111	106	99	2,23	1,83	2,88
IT061990879534	MANFREDI	A2A2	AB	4135	972	1826	-0,44	18	-0,01	59	106	103	114	112	1,31	2,64	0,94
IT015990572116	DIABOLO ROSSO	A2A2	AB	4126	914	1649	0,06	69	0,14	71	106	108	107	107	0,71	1,16	0,56
IT001991210622	DADO	A2A2	AB	4116	1086	858	0,52	91	0,15	45	109	120	119	106	0,85	1,34	2,14
IT001991322672	RITMO RF	A1A2	BB	4110	785	1215	0,41	91	0,12	58	109	103	108	102	1,65	2,13	1,93
IT004992104349	BELFANTE	A1A2	BE	4098	945	1061	0,39	84	0,12	49	110	107	114	104	1,16	1,85	1,60
IT019991867324	NIBALI	A2A2	BB	4096	890	1310	-0,03	44	0,14	60	102	108	109	109	1,39	2,03	1,02
IT001991277819	BRUNELLESCHI	A2A2	AA	4093	711	1626	0,07	68	0,09	68	107	100	104	100	2,38	2,86	1,80
IT015990518306	INDRO	A1A2	AE	4088	686	1691	0,07	67	0,15	75	99	103	107	98	2,59	3,77	2,10
IT019991766043	SCANSANO	A2A2	BB	4063	993	1286	-0,17	28	0,16	63	104	102	112	110	0,75	1,55	1,29
IT019991792584	SILLA	A1A2	BE	4063	828	1039	0,19	60	0,17	58	104	103	109	107	1,17	1,92	0,55
IT098990806252	TSUNAMI	A1A1	AB	4055	705	445	0,24	45	0,25	45	110	100	109	106	2,08	3,50	0,59
IT004992267916	WODOO	A1A1	BE	4048	798	1597	0,61	129	0,17	74	100	107	104	100	1,12	1,12	-0,42
IT019991987840	BERTON	A1A2	AB	4015	779	2063	-0,17	57	-0,02	68	112	97	109	102	1,86	1,34	0,84
IT019991816277	PUCCINI	A2A2	AB	4009	845	1083	0,03	46	0,20	59	105	105	109	107	1,17	1,61	0,60
IT019991816264	CELLINI	A2A2	BB	3955	1022	1685	0,01	66	0,01	63	107	107	115	104	0,87	0,31	2,67
IT019991728974	SORRENTO	A2A2	AB	3934	604	669	0,57	88	0,29	56	109	107	100	98	1,86	2,19	3,46
IT028990497065	FORTE	A2A2	AA	3882	729	2564	-0,06	84	0,01	89	104	93	108	96	1,21	1,55	-1,43
IT018990237944	APPIUS RED P	A1A1	BE	3866	1043	826	0,19	49	0,23	54	102	109	116	106	0,69	0,41	3,46
IT019991856548	NOCINO	A1A2	BB	3848	716	1649	-0,38	17	0,16	75	102	105	106	103	1,08	1,68	0,50
IT001991144894	ARETINO	A2A2	AB	3842	855	1444	-0,20	34	0,08	59	110	103	111	107	0,83	0,75	-0,07
NL000621264063	SANZIO	A1A2	AA	3791	768	1548	0,10	70	0,12	67	103	106	109	100	0,92	1,62	0,11
IT036990627056	RAFFAELLO	A2A2	BB	3783	611	683	0,28	53	0,19	43	107	99	107	101	2,18	2,62	3,41
NL000627599682	BARONE ROSSO	A1A2	BB	3779	667	1413	0,00	53	0,19	68	101	103	104	99	1,25	2,26	1,72
IT019991728989	BELLAGIO	A2A2	AA	3776	708	739	0,41	72	0,17	42	101	102	110	104	2,04	2,48	2,24
IT098990744592	TANTUM	A1A1	AE	3718	659	277	0,09	21	0,14	27	104	101	115	105	2,32	4,19	1,70
IT017992284863	ALGEROSSO P	A1A2	AB	3705	857	1327	0,21	70	0,18	65	102	112	115	98	0,80	1,24	0,59
NL000673947046	RUBESCO	A2A2	AA	3675	656	1714	0,02	67	0,11	73	97	105	106	97	1,59	2,22	0,93
IT098990790444	WALLY RED P	A2A2	BB	3658	795	1509	0,27	82	0,17	69	98	111	111	95	0,88	1,16	1,70
IT006990129591	SOGNO ROSSO	A2A2	AB	3338	591	78	0,18	30	0,17	23	107	112	109	106	1,08	1,37	0,92

# KBB TOP 10

Naab Code	Name	A2A2	KBB	TPI	NM\$	Milk (lbs)	Fat (lbs)	Fat %	Prot. (lbs)	Prot. %	CFP	SCS	PL	DPR	SCE	LIV	GL	FI	PTAT	UDC	FLC	Teat Length
543H000294	FABIUS	A1A1	BB	2890	900	646	92	0,23	47	0,09	139	2,67	5,10	-0,30	2,10	2,40	-3,50	0,20	1,22	1,44	0,21	-0,60
543H000291	MANTRA	A1A2	BB	2796	794	908	65	0,10	55	0,09	120	2,76	4,90	-1,60	2,60	-0,10	-0,20	-0,90	2,05	1,84	0,48	-0,40
543H000304	LUDWIG	A2A2	BB	2774	796	1405	61	0,02	63	0,07	124	2,70	5,00	-1,10	1,80	0,10	-0,30	-0,30	1,08	0,82	0,74	1,40
543H000261	ELETTR0	A1A2	BB	2729	682	-1	68	0,24	31	0,11	99	2,59	4,20	2,00	2,10	0,80	0,40	2,00	0,83	1,75	-0,42	0,20
543H000279	PORTOFINO	A1A2	BB	2703	538	1296	52	0,01	57	0,06	109	2,85	1,70	-1,30	2,30	-2,10	-0,70	-0,80	2,32	2,28	0,25	-0,40
543H000295	TIALOCO	A1A2	BB	2701	676	1026	26	-0,05	39	0,02	65	2,51	5,90	2,00	1,70	2,50	-2,00	1,90	1,57	1,98	-0,04	-0,10
543H000282	WALLY RED P	A2A2	BB	2644	683	962	69	0,11	46	0,06	115	3,01	3,20	-2,20	1,60	2,30	-3,00	-1,40	1,15	1,28	0,97	-0,40
543H000254	DESICA	A1A2	BB	2639	698	-49	47	0,17	30	0,11	77	2,66	4,70	2,50	2,00	2,50	-1,80	2,50	0,40	1,06	-0,36	-1,10
543H000163	LIVER	A2A2	BB	2628	623	1389	40	-0,05	44	0,00	84	2,66	3,60	2,00	2,00	0,20	0,20	1,80	0,81	1,17	-0,14	0,80
543H000237	STRADIVARI	A1A1	BB	2616	482	780	44	0,05	48	0,08	92	2,79	2,30	0,70	2,20	0,10	-1,80	1,00	1,31	1,39	0,12	0,80

USDA 12/2022

# A2A2 TOP 10

Naab Code	Name	A2A2	KBB	TPI	NM\$	Milk (lbs)	Fat (lbs)	Fat %	Prot. (lbs)	Prot. %	CFP	SCS	PL	DPR	SCE	LIV	GL	FI	PTAT	UDC	FLC	Teat Length
543H000296	MAKUMBA	A2A2	AB	2818	838	1206	89	0,15	58	0,07	147	2,78	3,70	-0,40	1,80	0,50	-2,40	0,10	0,78	0,84	0,02	0,10
543H000286	AVON	A2A2	AA	2797	801	820	72	0,14	41	0,05	113	2,76	5,00	0,80	2,00	2,00	-3,00	1,50	0,83	1,55	-0,06	-1,10
543H000252	DISTEFANO	A2A2	AA	2784	717	979	70	0,11	51	0,07	121	2,66	3,60	-1,20	1,80	1,60	-2,00	-0,60	1,72	2,03	0,07	0,10
543H000304	LUDWIG	A2A2	BB	2774	796	1405	61	0,02	63	0,07	124	2,70	5,00	-1,10	1,80	0,10	-0,30	-0,30	1,08	0,82	0,74	1,40
543H000300	SALUZZO	A2A2	AA	2750	841	1254	72	0,08	62	0,08	134	2,54	4,50	-0,20	1,50	1,60	-3,20	0,30	-0,01	0,31	-0,72	0,40
543H000292	KING RED P	A2A2	AA	2736	699	934	50	0,05	44	0,05	94	2,70	4,80	1,70	1,40	1,70	-1,30	1,80	0,98	1,20	1,48	-0,30
543H000289	SONIK	A2A2	AB	2702	667	1056	73	0,11	51	0,06	124	2,85	2,10	-1,50	2,50	-1,00	-2,30	-1,10	1,77	1,73	-0,01	-0,30
543H000244	GHIRBERTI	A2A2	AA	2701	581	625	75	0,18	42	0,08	117	2,74	1,30	-2,40	1,70	-2,20	-1,80	-1,80	2,17	2,07	1,16	-1,80
543H000191	BELLAGIO	A2A2	AA	2700	630	927	66	0,10	43	0,05	109	2,96	2,90	-1,40	2,20	0,30	0,00	-0,50	1,76	1,99	0,88	-1,60
543H000297	FORTE	A2A2	AA	2699	677	1982	69	-0,02	58	-0,01	127	2,75	2,30	-3,40	2,80	-2,70	-1,60	-2,60	1,92	2,44	-0,08	0,10

USDA 12/2022

# Milk TOP 10

Naab Code	Name	A2A2	KBB	TPI	NM\$	Milk (lbs)	Fat (lbs)	Fat %	Prot. (lbs)	Prot. %	CFP	SCS	PL	DPR	SCE	LIV	GL	FI	PTAT	UDC	FLC	Teat Length
543H000297	FORTE	A2A2	AA	2699	677	1982	69	-0,02	58	-0,01	127	2,75	2,30	-3,40	2,80	-2,70	-1,60	-2,60	1,92	2,44	-0,08	0,10
543H000152	MOONDANCE	A2A2	AA	2389	315	1981	29	-0,16	50	-0,04	79	3,15	0,40	-2,04	2,20	-1,90	-1,00	-1,50	1,55	1,21	0,18	-1,90
543H000270	BERTON	A1A2	AB	2656	602	1966	57	-0,06	58	-0,01	115	2,69	2,70	-2,10	2,80	-2,70	-2,00	-1,20	1,66	1,37	0,27	-0,10
543H000167	NEUTRON	A2A2	BB	2528	487	1699	20	-0,15	57	0,01	77	2,86	2,10	0,90	1,90	-1,80	-0,70	1,00	1,12	0,93	0,25	0,20
543H000208	RUBESCO	A2A2	AA	2658	629	1688	66	0,00	63	0,04	129	3,00	2,10	-2,60	2,00	-2,90	-0,60	-1,60	1,41	1,48	0,09	-0,20
543H000221	EMERITO	A1A2	AE	2604	627	1664	52	-0,04	64	0,04	116	2,83	3,30	-1,90	2,40	0,10	-0,60	-1,30	1,24	0,88	-0,77	0,20
543H000247	CARLOMAGNO	A1A2	BE	2681	661	1641	57	-0,02	70	0,06	127	2,83	3,60	-1,30	2,60	0,10	-2,20	-0,70	1,33	0,54	-0,27	-0,80
543H000265	BRUNELLESCHI	A2A2	AA	2632	552	1527	62	0,01	54	0,02	116	2,79	0,70	-1,90	2,10	-4,10	-2,50	-1,50	1,88	2,11	-0,64	0,00
543H000272	KYRIOS	A1A2	AB	2625	525	1451	21	-0,12	44	0,00	65	2,60	4,70	1,50	1,70	1,80	-1,10	1,60	1,44	1,36	0,64	0,40
543H000257	PASOLINI	A2A2	AB	2634	546	1436	23	-0,11	60	0,05	83	2,78	3,30	2,50	1,70	-0,90	-2,40	2,70	1,02	1,07	-0,08	-0,10

USDA 12/2022

# 6 GTPI TOP 10



Naab Code	Name	A2A2	KBB	TPI	NM\$	Milk (lbs)	Fat (lbs)	Fat %	Prot. (lbs)	Prot. %	CFP	SCS	PL	DPR	SCE	LIV	GL	FI	PTAT	UDC	FLC	Teat Length
543H000294	FABIUS	A1A1	BB	2890	900	646	92	0,23	47	0,09	139	2,67	5,10	-0,30	2,10	2,40	-3,50	0,20	1,22	1,44	0,21	-0,60
543H000299	WODOO	A1A1	BE	2836	881	1220	109	0,21	47	0,03	156	2,88	2,50	-2,30	2,00	0,30	-3,10	-1,60	1,60	1,52	-0,13	-0,80
543H000296	MAKUMBA	A2A2	AB	2818	838	1206	89	0,15	58	0,07	147	2,78	3,70	-0,40	1,80	0,50	-2,40	0,10	0,78	0,84	0,02	0,10
543H000303	ERIK P	A1A1	AB	2815	695	1006	80	0,14	56	0,09	136	2,79	2,70	0,80	2,60	-0,80	-0,20	1,10	1,33	1,13	0,24	1,10
543H000305	LILIUM	A1A2	AB	2799	741	1424	59	0,01	60	0,05	119	2,64	4,20	-0,60	2,10	0,30	-1,40	-0,20	1,34	1,85	0,41	0,10
543H000286	AVON	A2A2	AA	2797	801	820	72	0,14	41	0,05	113	2,76	5,00	0,80	2,00	2,00	-3,00	1,50	0,83	1,55	-0,06	-1,10
543H000291	MANTRA	A1A2	BB	2796	794	908	65	0,10	55	0,09	120	2,76	4,90	-1,60	2,60	-0,10	-0,20	-0,90	2,05	1,84	0,48	-0,40
543H000252	DISTEFANO	A2A2	AA	2784	717	979	70	0,11	51	0,07	121	2,66	3,60	-1,20	1,80	1,60	-2,00	-0,60	1,72	2,03	0,07	0,10
543H000304	LUDWIG	A2A2	BB	2774	796	1405	61	0,02	63	0,07	124	2,70	5,00	-1,10	1,80	0,10	-0,30	-0,30	1,08	0,82	0,74	1,40
543H000262	BELFANTE	A1A2	BE	2772	764	906	85	0,17	38	0,03	123	2,70	4,60	-1,30	1,90	1,20	-3,10	-0,70	1,49	1,55	0,26	-0,30

USDA 12/2022

# NM\$ TOP 10

Naab Code	Name	A2A2	KBB	TPI	NM\$	Milk (lbs)	Fat (lbs)	Fat %	Prot. (lbs)	Prot. %	CFP	SCS	PL	DPR	SCE	LIV	GL	FI	PTAT	UDC	FLC	Teat Length
543H000294	FABIUS	A1A1	BB	2890	900	646	92	0,23	47	0,09	139	2,67	5,10	-0,30	2,10	2,40	-3,50	0,20	1,22	1,44	0,21	-0,60
543H000299	WODOO	A1A1	BE	2836	881	1220	109	0,21	47	0,03	156	2,88	2,50	-2,30	2,00	0,30	-3,10	-1,60	1,60	1,52	-0,13	-0,80
543H000300	SALUZZO	A2A2	AA	2750	841	1254	72	0,08	62	0,08	134	2,54	4,50	-0,20	1,50	1,60	-3,20	0,30	-0,01	0,31	-0,72	0,40
543H000296	MAKUMBA	A2A2	AB	2818	838	1206	89	0,15	58	0,07	147	2,78	3,70	-0,40	1,80	0,50	-2,40	0,10	0,78	0,84	0,02	0,10
543H000253	APPIUS RED	A1A1	BE	2694	809	685	45	0,07	43	0,08	88	2,81	6,10	1,00	1,30	2,60	-2,00	1,10	0,40	1,07	1,28	-0,80
543H000286	AVON	A2A2	AA	2797	801	820	72	0,14	41	0,05	113	2,76	5,00	0,80	2,00	2,00	-3,00	1,50	0,83	1,55	-0,06	-1,10
543H000304	LUDWIG	A2A2	BB	2774	796	1405	61	0,02	63	0,07	124	2,70	5,00	-1,10	1,80	0,10	-0,30	-0,30	1,08	0,82	0,74	1,40
543H000291	MANTRA	A1A2	BB	2796	794	908	65	0,10	55	0,09	120	2,76	4,90	-1,60	2,60	-0,10	-0,20	-0,90	2,05	1,84	0,48	-0,40
543H000255	ALCROSSO	A1A2	AB	2654	769	1153	69	0,08	52	0,06	121	2,91	3,90	-1,30	1,80	0,60	-1,50	-1,10	0,86	0,90	0,37	0,20
543H000262	BELFANTE	A1A2	BE	2772	764	906	85	0,17	38	0,03	123	2,70	4,60	-1,30	1,90	1,20	-3,10	-0,70	1,49	1,55	0,26	-0,30

USDA 12/2022



PODERI  
INSEME

# ARES

IT004992438666 - 543HO00293 - aAa 243



**CRISALIS RF**

**PADAWAN**

**FRANCHISE**

Gywer x Salvatore

Burla B+83

Adorata MB87



Poderi Inseme Ares

**TPI**  
**+2669**

**NET MERIT**  
**\$ 686**

**CHEESE MERIT**  
**\$ 708**

► **PRODUCTION TRAITS (79% REL)**

Milk	% Fat	Fat	% Protein	Protein
<b>+1137 lbs</b>	<b>-0,02</b>	<b>+38</b>	<b>+0,07</b>	<b>+57</b>
K Casein <b>AB</b>		Beta Lactoglobuline <b>AA</b>		Beta Casein <b>A1A2</b>

► **HEALTH TRAITS**

SCS	<b>+2,57</b>	SCE	<b>+1,90</b>
PL	<b>+5,30</b>	DCE	<b>+2,20</b>
DPR	<b>+1,30</b>	FI	<b>+1,60</b>



Griseri Secretariat Vanessa MB85

► **TYPE TRAITS**

PTAT **+0,47** UDC **+0,69** FLC **-0,41**

Stature				<b>1,30</b>
Stenght				<b>0,38</b>
Body Dept				<b>0,09</b>
Dairy Form				<b>-0,16</b>
Rump Angle				<b>0,31</b>
Thurl Width				<b>0,30</b>
Rear Legs-Side				<b>-1,05</b>
Rear Legs-Rear				<b>0,16</b>
Foot Angle				<b>0,66</b>
Feet & Legs Score				<b>-0,20</b>
F. Udder Attachment				<b>1,20</b>
Rear Udder Height				<b>1,11</b>
Rear Udder Width				<b>0,62</b>
Udder Cleft				<b>-0,05</b>
Udder Depth				<b>1,50</b>
Front Teat Placement				<b>0,09</b>
Rear Teat P. Rear				<b>0,20</b>
Teat Lenght				<b>0,34</b>

SERRA FARM  
ARETINO

# ARETINO

IT001991144894 - 543HO00218

**PADAWAN**

**SUPERSHOT**

**TANGO UNO**

Jedi x Enforcer

Serra Farm Aryel ET  
VG85

Serra Farm Tango  
Vera VG88



Serra Farm Aretino

**TPI**  
**+2438**

**NET MERIT**  
**\$ 388**

**CHEESE MERIT**  
**\$ 396**

► **PRODUCTION TRAITS (81% REL)**

Milk	% Fat	Fat	% Protein	Protein
<b>+1323 lbs</b>	<b>-0,10</b>	<b>+21</b>	<b>+0,01</b>	<b>+44</b>
K Casein <b>AB</b>		Beta Lactoglobuline <b>AA</b>		Beta Casein <b>A2A2</b>

► **HEALTH TRAITS**

SCS	<b>+2,72</b>	SCE	<b>+2,30</b>
PL	<b>+3,20</b>	DCE	<b>+2,30</b>
DPR	<b>+1,10</b>	FI	<b>+1,20</b>



Rimbosio Supershot

► **TYPE TRAITS**

PTAT **+0,64** UDC **+0,64** FLC **-0,55**

Stature				<b>1,59</b>
Stenght				<b>1,55</b>
Body Dept				<b>0,78</b>
Dairy Form				<b>0,09</b>
Rump Angle				<b>0,66</b>
Thurl Width				<b>1,49</b>
Rear Legs-Side				<b>-2,34</b>
Rear Legs-Rear				<b>0,01</b>
Foot Angle				<b>1,11</b>
Feet & Legs Score				<b>-0,18</b>
F. Udder Attachment				<b>1,12</b>
Rear Udder Height				<b>0,78</b>
Rear Udder Width				<b>1,07</b>
Udder Cleft				<b>0,68</b>
Udder Depth				<b>1,09</b>
Front Teat Placement				<b>0,43</b>
Rear Teat P. Rear				<b>0,62</b>
Teat Lenght				<b>-0,31</b>







DELLAROSSA  
INSEME

# BELFANTE

IT004992104349 - 543HO00262 - aAa 243

**ZAREK**

TopShot x Rubicon

**SOUND SYSTEM**

Dellarossa Soundsystem  
Bea B+82

**DRACO**

Dellarossa Draco  
Zebra MB88



Dellarossa Draco Zebra ET VG88 - Nonna di Belfante

**TPI**  
**+2772**

**NET MERIT**  
**\$ 764**

**CHEESE MERIT**  
**\$ 776**

► **PRODUCTION TRAITS** (81% REL)

Milk	% Fat	Fat	% Protein	Protein
<b>+906 lbs</b>	<b>+0,17</b>	<b>+85</b>	<b>+0,03</b>	<b>+38</b>
K Casein <b>BE</b>		Beta Lactoglobuline <b>AB</b>		Beta Casein <b>A1A2</b>

► **HEALTH TRAITS**

SCS	<b>+2,70</b>	SCE	<b>+1,90</b>
PL	<b>+4,60</b>	DCE	<b>+1,70</b>
DPR	<b>-1,30</b>	FI	<b>-0,70</b>

► **TYPE TRAITS**

PTAT **+1,49** UDC **+1,55** FLC **+0,26**

Stature					<b>1,25</b>
Stenght					<b>0,09</b>
Body Dept					<b>-0,07</b>
Dairy Form					<b>0,61</b>
Rump Angle					<b>0,72</b>
Thurl Width					<b>-0,13</b>
Rear Legs-Side					<b>0,78</b>
Rear Legs-Rear					<b>0,07</b>
Foot Angle					<b>0,37</b>
Feet & Legs Score					<b>0,66</b>
F. Udder Attachment					<b>&gt; 2,52</b>
Rear Udder Height					<b>&gt; 2,25</b>
Rear Udder Width					<b>1,67</b>
Udder Cleft					<b>-0,45</b>
Udder Depth					<b>&gt; 2,01</b>
Front Teat Placement					<b>0,24</b>
Rear Teat P. Rear					<b>-0,21</b>
Teat Lenght					<b>-0,25</b>

-1 -0,5 0 +0,5 +1 +1,5 +2

CRISTELLA  
INSEME

# BERTON

IT019991987840 - 543HO00270 - aAa 234



**BOULEVARD**

Router x Afterburner

**SOUND SYSTEM**

Cristella MB85

**JEDI**

Cristella Mamey B79



Cristella Inseme Berton

**TPI**  
**+2656**

**NET MERIT**  
**\$ 602**

**CHEESE MERIT**  
**\$ 608**

► **PRODUCTION TRAITS** (80% REL)

Milk	% Fat	Fat	% Protein	Protein
<b>+1966 lbs</b>	<b>-0,06</b>	<b>+57</b>	<b>-0,01</b>	<b>+58</b>
K Casein <b>AB</b>		Beta Lactoglobuline <b>AA</b>		Beta Casein <b>A1A2</b>

► **HEALTH TRAITS**

SCS	<b>+2,69</b>	SCE	<b>+2,80</b>
PL	<b>+2,70</b>	DCE	<b>+2,80</b>
DPR	<b>-2,10</b>	FI	<b>-1,20</b>

► **TYPE TRAITS**

PTAT **+1,66** UDC **+1,37** FLC **+0,27**

Stature					<b>1,63</b>
Stenght					<b>1,16</b>
Body Dept					<b>1,56</b>
Dairy Form					<b>&gt; 2,28</b>
Rump Angle					<b>0,47</b>
Thurl Width					<b>0,78</b>
Rear Legs-Side					<b>0,40</b>
Rear Legs-Rear					<b>0,51</b>
Foot Angle					<b>0,68</b>
Feet & Legs Score					<b>0,62</b>
F. Udder Attachment					<b>1,01</b>
Rear Udder Height					<b>&gt; 2,54</b>
Rear Udder Width					<b>&gt; 2,69</b>
Udder Cleft					<b>1,41</b>
Udder Depth					<b>0,22</b>
Front Teat Placement					<b>1,33</b>
Rear Teat P. Rear					<b>1,53</b>
Teat Lenght					<b>-0,12</b>

-1 -0,5 0 +0,5 +1 +1,5 +2



Cristella ET- Madre di Berton

LA PORTEA  
INSEME

# BLANCO

IT103990033871 - 543HO00290 - aAa 243

IL SEME SESSATO *Made in Italy*  
**FOEMINA**  
Sexed **ULTRA 4M****EINSTEIN**

Topnotch x Duke

**CASPER**Isolabella Inseme  
Beautiful B+84**HOTROD**Isolabella Royal  
Bamby B+84**TPI**  
**+2726****NET MERIT**  
**\$ 633****CHEESE MERIT**  
**\$ 651**

La Portea Inseme Blanco

**► PRODUCTION TRAITS (81% REL)**

Milk	% Fat	Fat	% Protein	Protein
<b>+961 lbs</b>	<b>+0,13</b>	<b>+76</b>	<b>+0,07</b>	<b>+49</b>
K Casein <b>AB</b>		Beta Lactoglobuline <b>AA</b>		Beta Casein <b>A1A2</b>

**► HEALTH TRAITS**

SCS	<b>+2,68</b>	SCE	<b>+2,50</b>
PL	<b>+2,30</b>	DCE	<b>+2,70</b>
DPR	<b>-1,60</b>	FI	<b>-1,50</b>



Isolabella Beautiful

**► TYPE TRAITS**PTAT **+1,96** UDC **+2,17** FLC **-0,04**

Stature					<b>1,57</b>
Stenght					<b>1,11</b>
Body Dept					<b>1,10</b>
Dairy Form					<b>1,45</b>
Rump Angle					<b>0,58</b>
Thurl Width					<b>1,91</b>
Rear Legs-Side					<b>-0,58</b>
Rear Legs-Rear					<b>-0,17</b>
Foot Angle					<b>0,50</b>
Feet & Legs Score					<b>0,43</b>
F. Udder Attachment					<b>&gt; 2,50</b>
Rear Udder Height					<b>&gt; 2,53</b>
Rear Udder Width					<b>&gt; 3,49</b>
Udder Cleft					<b>&gt; 2,03</b>
Udder Depth					<b>1,44</b>
Front Teat Placement					<b>1,32</b>
Rear Teat P. Rear					<b>1,78</b>
Teat Lenght					<b>0,09</b>

-1 -0,5 0 +0,5 +1 +1,5 +2

ISOLABELLA  
BRIATORE

# BRIATORE

IT001991129517 - 543HO00214 - aAa 213

IL SEME SESSATO *Made in Italy*  
**FOEMINA**  
Sexed **ULTRA 4M****ARGO**

Silver x Supersire

**HOTROD**

Jerod x Iota

**DOORMAN**

Bookem x Shottle

**TPI**  
**+2405****NET MERIT**  
**\$ 201****CHEESE MERIT**  
**\$ 206**

Isolabella Briatore

**► PRODUCTION TRAITS (82% REL)**

Milk	% Fat	Fat	% Protein	Protein
<b>+802 lbs</b>	<b>-0,03</b>	<b>+22</b>	<b>+0,02</b>	<b>+31</b>
K Casein <b>AB</b>		Beta Lactoglobuline <b>AA</b>		Beta Casein <b>A1A2</b>

**► HEALTH TRAITS**

SCS	<b>+2,94</b>	SCE	<b>+2,60</b>
PL	<b>+0,40</b>	DCE	<b>+2,20</b>
DPR	<b>-0,80</b>	FI	<b>-0,40</b>

**► TYPE TRAITS**PTAT **+2,41** UDC **+2,04** FLC **+0,72**

Stature					<b>&gt; 4,09</b>
Stenght					<b>1,76</b>
Body Dept					<b>2,00</b>
Dairy Form					<b>1,95</b>
Rump Angle					<b>1,62</b>
Thurl Width					<b>&gt; 2,30</b>
Rear Legs-Side					<b>0,02</b>
Rear Legs-Rear					<b>1,58</b>
Foot Angle					<b>&gt; 2,30</b>
Feet & Legs Score					<b>1,46</b>
F. Udder Attachment					<b>&gt; 3,07</b>
Rear Udder Height					<b>&gt; 3,10</b>
Rear Udder Width					<b>&gt; 2,79</b>
Udder Cleft					<b>1,81</b>
Udder Depth					<b>&gt; 3,28</b>
Front Teat Placement					<b>1,47</b>
Rear Teat P. Rear					<b>1,42</b>
Teat Lenght					<b>-1,04</b>

-1 -0,5 0 +0,5 +1 +1,5 +2

ISOLABELLA  
INSEME

# BRUNELLESCHI

IT001991277819 - 543HO00265 - aAa 243



Isolabella Inseme Brunelleschi

**DATELINE**

Hotline x Montross

**SOUND SYSTEM**

Isolabella Cicala MB86

**HOTROD**

Isolabella Royal Bamby B+84

**TPI**  
**+2632**

**NET MERIT**  
**\$ 552**

**CHEESE MERIT**  
**\$ 561**

**PRODUCTION TRAITS (81% REL)**

Milk	% Fat	Fat	% Protein	Protein
<b>+1527 lbs</b>	<b>+0,01</b>	<b>+62</b>	<b>+0,02</b>	<b>+54</b>
K Casein <b>AA</b>		Beta Lactoglobuline <b>AB</b>		Beta Casein <b>A2A2</b>

**HEALTH TRAITS**

SCS	<b>+2,79</b>	SCE	<b>+2,10</b>
PL	<b>+0,70</b>	DCE	<b>+1,50</b>
DPR	<b>-1,90</b>	FI	<b>-1,50</b>



**TYPE TRAITS**

PTAT **+1,88** UDC **+2,11** FLC **-0,64**

Stature					<b>2,50</b>
Stenght					<b>0,87</b>
Body Dept					<b>1,24</b>
Dairy Form					<b>2,26</b>
Rump Angle					<b>1,76</b>
Thurl Width					<b>1,12</b>
Rear Legs-Side					<b>-0,76</b>
Rear Legs-Rear					<b>-0,15</b>
Foot Angle					<b>0,91</b>
Feet & Legs Score					<b>-0,09</b>
F. Udder Attachment					<b>2,59</b>
Rear Udder Height					<b>3,19</b>
Rear Udder Width					<b>3,08</b>
Udder Cleft					<b>1,43</b>
Udder Depth					<b>1,89</b>
Front Teat Placement					<b>1,22</b>
Rear Teat P. Rear					<b>1,24</b>
Teat Length					<b>-0,01</b>

IDEVRA  
ROYAL INSEME

# CARLOMAGNO

IT019991894420 - 543HO00247 - aAa 234



Idevra Royal Inseme Carlomagno

**BRAMANTE**

Sound System x Hotrod

**TABASCO**

Idevra Tabasco Roberto MB87

**SUPERSHOT**

Idevra Royal Carlina B+81

**TPI**  
**+2681**

**NET MERIT**  
**\$ 661**

**CHEESE MERIT**  
**\$ 676**

**PRODUCTION TRAITS (81% REL)**

Milk	% Fat	Fat	% Protein	Protein
<b>+1641 lbs</b>	<b>-0,02</b>	<b>+57</b>	<b>+0,06</b>	<b>+70</b>
K Casein <b>BE</b>		Beta Lactoglobuline <b>AA</b>		Beta Casein <b>A1A2</b>

**HEALTH TRAITS**

SCS	<b>+2,83</b>	SCE	<b>+2,60</b>
PL	<b>+3,60</b>	DCE	<b>+2,40</b>
DPR	<b>-1,30</b>	FI	<b>-0,70</b>

**TYPE TRAITS**

PTAT **+1,33** UDC **+0,54** FLC **-0,27**

Stature					<b>2,40</b>
Stenght					<b>0,56</b>
Body Dept					<b>1,17</b>
Dairy Form					<b>2,36</b>
Rump Angle					<b>0,99</b>
Thurl Width					<b>1,84</b>
Rear Legs-Side					<b>2,22</b>
Rear Legs-Rear					<b>0,00</b>
Foot Angle					<b>0,35</b>
Feet & Legs Score					<b>0,44</b>
F. Udder Attachment					<b>0,68</b>
Rear Udder Height					<b>0,91</b>
Rear Udder Width					<b>1,63</b>
Udder Cleft					<b>1,41</b>
Udder Depth					<b>0,85</b>
Front Teat Placement					<b>0,81</b>
Rear Teat P. Rear					<b>1,05</b>
Teat Length					<b>-0,81</b>



Idevra Tabasco

IDEVRA  
ROYAL

## CELLINI

IT019991816264 - 543HO00220 - aAa 423


  
 IL SOGNO SESSATO *Made in Italy*  
**SexedULTRA 4M**


Idevra Royal Cellini

## NEBULA

Charley x Balisto

## JAGGER

Idevra Jagger B+78

## JUDO

Idevra Royal Celeste  
B+84TPI  
**+2534**NET MERIT  
**\$ 569**CHEESE MERIT  
**\$ 574**

## ► PRODUCTION TRAITS (81% REL)

Milk	% Fat	Fat	% Protein	Protein
<b>+1188 lbs</b>	<b>-0,01</b>	<b>+44</b>	<b>+0,00</b>	<b>+38</b>
K Casein <b>BB</b>		Beta Lactoglobuline <b>AB</b>		Beta Casein <b>A2A2</b>

## ► HEALTH TRAITS

SCS	<b>+2,81</b>	SCE	<b>+1,90</b>
PL	<b>+2,60</b>	DCE	<b>+1,50</b>
DPR	<b>-0,20</b>	FI	<b>+0,70</b>



## ► TYPE TRAITS

PTAT **+0,75** UDC **+0,54** FLC **+0,49**

Stature					<b>0,32</b>
Stenght					<b>-0,07</b>
Body Dept					<b>0,27</b>
Dairy Form					<b>1,15</b>
Rump Angle					<b>-0,07</b>
Thurl Width					<b>1,12</b>
Rear Legs-Side					<b>0,32</b>
Rear Legs-Rear					<b>0,60</b>
Foot Angle					<b>0,42</b>
Feet & Legs Score					<b>0,51</b>
F. Udder Attachment					<b>0,31</b>
Rear Udder Height					<b>0,78</b>
Rear Udder Width					<b>1,04</b>
Udder Cleft					<b>1,14</b>
Udder Depth					<b>-0,30</b>
Front Teat Placement					<b>1,45</b>
Rear Teat P. Rear					<b>1,32</b>
Teat Lenght					<b>0,55</b>

-1 -0,5 0 +0,5 +1 +1,5 +2

BORETTO  
INSEME

## DADO

IT001991210622 - 543HO00241 - aAa 324



Boretto Inseme Dado

## OUTBACK

Spectre x Troy

## FRANCHISE

Boretto MB85

## MOGUL

Boretto Uganda Gmv  
MB88TPI  
**+2631**NET MERIT  
**\$ 735**CHEESE MERIT  
**\$ 749**

## ► PRODUCTION TRAITS (81% REL)

Milk	% Fat	Fat	% Protein	Protein
<b>+186 lbs</b>	<b>+0,24</b>	<b>+74</b>	<b>+0,06</b>	<b>+22</b>
K Casein <b>AB</b>		Beta Lactoglobuline <b>AA</b>		Beta Casein <b>A2A2</b>

## ► HEALTH TRAITS

SCS	<b>+2,77</b>	SCE	<b>+0,80</b>
PL	<b>+4,20</b>	DCE	<b>+1,50</b>
DPR	<b>+0,60</b>	FI	<b>+0,90</b>



## ► TYPE TRAITS

PTAT **+0,31** UDC **+1,12** FLC **+0,01**

Stature					<b>-0,70</b>
Stenght					<b>-1,11</b>
Body Dept					<b>-1,10</b>
Dairy Form					<b>0,07</b>
Rump Angle					<b>-0,02</b>
Thurl Width					<b>-0,44</b>
Rear Legs-Side					<b>-1,77</b>
Rear Legs-Rear					<b>0,10</b>
Foot Angle					<b>0,53</b>
Feet & Legs Score					<b>-0,17</b>
F. Udder Attachment					<b>1,59</b>
Rear Udder Height					<b>1,01</b>
Rear Udder Width					<b>0,60</b>
Udder Cleft					<b>-0,52</b>
Udder Depth					<b>1,33</b>
Front Teat Placement					<b>0,26</b>
Rear Teat P. Rear					<b>0,04</b>
Teat Lenght					<b>-0,30</b>

-1 -0,5 0 +0,5 +1 +1,5 +2

IDEVRA  
INSEME

## DESICA

## DEREK

Charley x 1stclass

## SOUND SYSTEM

Baro Sound Inseme  
Diletta MB85

## MAZZARRI

Baro Mazzarri Boston  
MB87TPI  
**+2639**NET MERIT  
**\$ 698**CHEESE MERIT  
**\$ 722**

## ► PRODUCTION TRAITS (81% REL)

Milk	% Fat	Fat	% Protein	Protein
<b>-49 lbs</b>	<b>+0,17</b>	<b>+47</b>	<b>+0,11</b>	<b>+30</b>
K Casein <b>BB</b>		Beta Lactoglobuline <b>AA</b>		Beta Casein <b>A1A2</b>

## ► HEALTH TRAITS

SCS	<b>+2,66</b>	SCE	<b>+2,00</b>
PL	<b>+4,70</b>	DCE	<b>+2,00</b>
DPR	<b>+2,50</b>	FI	<b>+2,50</b>



Sound System Diletta - Dam of Desica

IT019992032586 - 543HO00254 - aAa 342

IL SEME SESSATO *Made in Italy*  
**FOEMINA**  
Sexed**ULTRA**

Idevra Inseme Desica

## ► TYPE TRAITS

PTAT **+0,40** UDC **+1,06** FLC **-0,36**

Stature						<b>0,10</b>
Stenght						<b>-0,50</b>
Body Dept						<b>-0,45</b>
Dairy Form						<b>0,04</b>
Rump Angle						<b>-0,15</b>
Thurl Width						<b>-0,60</b>
Rear Legs-Side						<b>0,49</b>
Rear Legs-Rear						<b>-0,55</b>
Foot Angle						<b>-0,05</b>
Feet & Legs Score						<b>-0,25</b>
F. Udder Attachment						<b>1,62</b>
Rear Udder Height						<b>0,81</b>
Rear Udder Width						<b>0,03</b>
Udder Cleft						<b>1,23</b>
Udder Depth						<b>1,76</b>
Front Teat Placement						<b>1,34</b>
Rear Teat P. Rear						<b>1,83</b>
Teat Length						<b>-1,13</b>

-1 -0,5 0 +0,5 +1 +1,5 +2

ISOLABELLA  
INSEME

## DISTEFANO

## HOTHAND

Hotline x Montross

## TOOHOT

Go-Farm Island

## SUPERMAN

Kns Inka MB85

TPI  
**+2784**NET MERIT  
**\$ 717**CHEESE MERIT  
**\$ 736**

## ► PRODUCTION TRAITS (81% REL)

Milk	% Fat	Fat	% Protein	Protein
<b>+979 lbs</b>	<b>+0,11</b>	<b>+70</b>	<b>+0,07</b>	<b>+51</b>
K Casein <b>AA</b>		Beta Lactoglobuline <b>AB</b>		Beta Casein <b>A2A2</b>

## ► HEALTH TRAITS

SCS	<b>+2,66</b>	SCE	<b>+1,80</b>
PL	<b>+3,60</b>	DCE	<b>+2,20</b>
DPR	<b>-1,20</b>	FI	<b>-0,60</b>



GoFarm Toohot - Dam of Indro and Distefano

IT001991277781 - 543HO00252 - aAa 432

IL SEME SESSATO *Made in Italy*  
**FOEMINA**  
Sexed**ULTRA 4M**

Isolabella Inseme Distefano

## ► TYPE TRAITS

PTAT **+1,72** UDC **+2,03** FLC **+0,07**

Stature						<b>2,06</b>
Stenght						<b>1,01</b>
Body Dept						<b>0,96</b>
Dairy Form						<b>0,92</b>
Rump Angle						<b>1,04</b>
Thurl Width						<b>0,25</b>
Rear Legs-Side						<b>-0,19</b>
Rear Legs-Rear						<b>0,75</b>
Foot Angle						<b>1,25</b>
Feet & Legs Score						<b>0,38</b>
F. Udder Attachment						<b>2,65</b>
Rear Udder Height						<b>2,63</b>
Rear Udder Width						<b>2,50</b>
Udder Cleft						<b>1,57</b>
Udder Depth						<b>2,43</b>
Front Teat Placement						<b>0,60</b>
Rear Teat P. Rear						<b>0,58</b>
Teat Length						<b>0,05</b>

-1 -0,5 0 +0,5 +1 +1,5 +2

INSEME

# ELETTRO

**GIORDANO**

Perseus x Rodanas

**FLAGSHIP**Flagship Bomb Eliza  
MB85**BOMBERO**Royal Bombeud  
Mattarella MB89**TPI**  
**+2729****NET MERIT**  
**\$ 682****CHEESE MERIT**  
**\$ 708****► PRODUCTION TRAITS (81% REL)**

Milk	% Fat	Fat	% Protein	Protein
<b>-1 lbs</b>	<b>+0,24</b>	<b>+68</b>	<b>+0,11</b>	<b>+31</b>
K Casein <b>BB</b>		Beta Lactoglobuline <b>AA</b>		Beta Casein <b>A1A2</b>

**► HEALTH TRAITS**

SCS	<b>+2,59</b>	SCE	<b>+2,10</b>
PL	<b>+4,20</b>	DCE	<b>+2,20</b>
DPR	<b>+2,00</b>	FI	<b>+2,00</b>



IT024990682547 - 543HO00261 - aAa 234

 IL SEME SECCATO *Milk*  
**FOEMINA**  
 Sexed**ULTRA**
**► TYPE TRAITS**
**PTAT +0,83 UDC +1,75 FLC -0,42**

Stature					<b>0,48</b>
Stenght					<b>0,27</b>
Body Dept					<b>0,10</b>
Dairy Form					<b>0,19</b>
Rump Angle					<b>-1,02</b>
Thurl Width					<b>1,07</b>
Rear Legs-Side					<b>-1,41</b>
Rear Legs-Rear					<b>-0,21</b>
Foot Angle					<b>1,12</b>
Feet & Legs Score					<b>-0,35</b>
F. Udder Attachment					<b>1,47</b>
Rear Udder Height					<b>&gt; 2,07</b>
Rear Udder Width					<b>1,87</b>
Udder Cleft					<b>1,82</b>
Udder Depth					<b>1,57</b>
Front Teat Placement					<b>1,21</b>
Rear Teat P. Rear					<b>1,69</b>
Teat Length					<b>0,19</b>

-1 -0,5 0 +0,5 +1 +1,5 +2

SABBIONA

# EMERITO

**MONTOYA**

Moreno x Supersire

**JEDI**Cnn Jedi Shaddow  
MB89**ROBUST**

Miss Amerika MB85

**TPI**  
**+2604****NET MERIT**  
**\$ 627****CHEESE MERIT**  
**\$ 638****► PRODUCTION TRAITS (81% REL)**

Milk	% Fat	Fat	% Protein	Protein
<b>+1664 lbs</b>	<b>-0,04</b>	<b>+52</b>	<b>+0,04</b>	<b>+64</b>
K Casein <b>AE</b>		Beta Lactoglobuline <b>AB</b>		Beta Casein <b>A1A2</b>

**► HEALTH TRAITS**

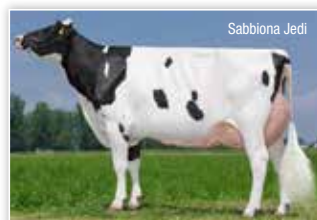
SCS	<b>+2,83</b>	SCE	<b>+2,40</b>
PL	<b>+3,30</b>	DCE	<b>+2,20</b>
DPR	<b>-1,90</b>	FI	<b>-1,30</b>

IT098990684345 - 543HO00221 - aAa 243615

**► TYPE TRAITS**
**PTAT +1,24 UDC +0,88 FLC -0,77**

Stature					<b>&gt; 2,31</b>
Stenght					<b>1,38</b>
Body Dept					<b>1,35</b>
Dairy Form					<b>1,30</b>
Rump Angle					<b>&gt; 2,49</b>
Thurl Width					<b>1,04</b>
Rear Legs-Side					<b>-0,18</b>
Rear Legs-Rear					<b>-0,65</b>
Foot Angle					<b>0,27</b>
Feet & Legs Score					<b>-0,13</b>
F. Udder Attachment					<b>1,21</b>
Rear Udder Height					<b>1,78</b>
Rear Udder Width					<b>1,55</b>
Udder Cleft					<b>0,67</b>
Udder Depth					<b>1,04</b>
Front Teat Placement					<b>0,76</b>
Rear Teat P. Rear					<b>1,01</b>
Teat Length					<b>0,19</b>

-1 -0,5 0 +0,5 +1 +1,5 +2



**New**

ISOLABELLA  
INSEME

# ERIK P

**HEART**

Renegade x Frazzled

**HOTSPOT**

Vogue Hotspot  
Emma-P

**DUKE**

Silvridge Duke  
Elsa-P MB87

**TPI**  
**+2815**

**NET MERIT**  
**\$ 695**

**CHEESE MERIT**  
**\$ 713**

► **PRODUCTION TRAITS (79% REL)**

Milk	% Fat	Fat	% Protein	Protein
<b>+1006 lbs</b>	<b>+0,14</b>	<b>+80</b>	<b>+0,09</b>	<b>+56</b>
K Casein <b>AB</b>		Beta Lactoglobuline <b>AB</b>		Beta Casein <b>A1A1</b>

► **HEALTH TRAITS**

SCS	<b>+2,79</b>	SCE	<b>+2,60</b>
PL	<b>+2,70</b>	DCE	<b>+2,40</b>
DPR	<b>+0,80</b>	FI	<b>+1,10</b>

IT001991454452 - 543HO00303

IL SEME SESSATO *Made in Italy*  
**FOEMINA**  
Sexed **ULTRA 4M**



Isolabella Inseme Erik P

► **TYPE TRAITS**

PTAT **+1,33** UDC **+1,13** FLC **+0,24**

Stature					<b>1,79</b>
Stenght					<b>1,25</b>
Body Dept					<b>0,85</b>
Dairy Form					<b>0,63</b>
Rump Angle					<b>1,13</b>
Thurl Width					<b>1,08</b>
Rear Legs-Side					<b>-0,53</b>
Rear Legs-Rear					<b>0,64</b>
Foot Angle					<b>0,95</b>
Feet & Legs Score					<b>0,58</b>
F. Udder Attachment					<b>1,69</b>
Rear Udder Height					<b>1,97</b>
Rear Udder Width					<b>2,05</b>
Udder Cleft					<b>0,22</b>
Udder Depth					<b>1,36</b>
Front Teat Placement					<b>-0,07</b>
Rear Teat P. Rear					<b>-0,09</b>
Teat Lenght					<b>1,11</b>



GO-FARM  
INSEME

# FABIUS

**ZAZZLE**

Marius x Topshot

**LAWSON**

Progenis Flora 3902

**FRAZZLED**

Welcome Frazzled  
Fanfare

**TPI**  
**+2890**

**NET MERIT**  
**\$ 900**

**CHEESE MERIT**  
**\$ 922**

► **PRODUCTION TRAITS (80% REL)**

Milk	% Fat	Fat	% Protein	Protein
<b>+646 lbs</b>	<b>+0,23</b>	<b>+92</b>	<b>+0,09</b>	<b>+47</b>
K Casein <b>BB</b>		Beta Lactoglobuline <b>AA</b>		Beta Casein <b>A1A1</b>

► **HEALTH TRAITS**

SCS	<b>+2,67</b>	SCE	<b>+2,10</b>
PL	<b>+5,10</b>	DCE	<b>+1,80</b>
DPR	<b>-0,30</b>	FI	<b>+0,20</b>

IT019992239603 - 543HO00294 - aAa 243

IL SEME SESSATO *Made in Italy*  
**FOEMINA**  
Sexed **ULTRA 4M**



Go-Farm Inseme Fabius

► **TYPE TRAITS**

PTAT **+1,22** UDC **+1,44** FLC **+0,21**

Stature					<b>1,12</b>
Stenght					<b>0,22</b>
Body Dept					<b>0,07</b>
Dairy Form					<b>0,84</b>
Rump Angle					<b>0,30</b>
Thurl Width					<b>1,19</b>
Rear Legs-Side					<b>0,44</b>
Rear Legs-Rear					<b>-0,12</b>
Foot Angle					<b>0,54</b>
Feet & Legs Score					<b>0,59</b>
F. Udder Attachment					<b>2,09</b>
Rear Udder Height					<b>1,72</b>
Rear Udder Width					<b>1,80</b>
Udder Cleft					<b>0,24</b>
Udder Depth					<b>1,77</b>
Front Teat Placement					<b>0,96</b>
Rear Teat P. Rear					<b>0,31</b>
Teat Lenght					<b>-0,60</b>



GDAM Fabius

GEGANIA  
INSEME

# FORTE

IT028990497065 - 543HO00297 - aAa 423



Gegania Inseme Fonte

**MACHONE**

Milktime x Romero

**FRAZZLED**

Frazzled Brenda MB86

**DENVER**

Denver Zarina MB89

**TPI**  
**+2699**

**NET MERIT**  
**\$ 677**

**CHEESE MERIT**  
**\$ 681**

► **PRODUCTION TRAITS** (79% REL)

Milk	% Fat	Fat	% Protein	Protein
<b>+1982 lbs</b>	<b>-0,02</b>	<b>+69</b>	<b>-0,01</b>	<b>+58</b>
K Casein <b>AA</b>		Beta Lactoglobuline <b>AA</b>		Beta Casein <b>A2A2</b>

► **HEALTH TRAITS**

SCS	<b>+2,75</b>	SCE	<b>+2,80</b>
PL	<b>+2,30</b>	DCE	<b>+3,50</b>
DPR	<b>-3,40</b>	FI	<b>-2,60</b>



► **TYPE TRAITS**

PTAT **+1,92** UDC **+2,44** FLC **-0,08**

Stature					<b>1,03</b>
Stenght					<b>0,26</b>
Body Dept					<b>0,60</b>
Dairy Form					<b>2,24</b>
Rump Angle					<b>0,15</b>
Thurl Width					<b>1,46</b>
Rear Legs-Side					<b>0,40</b>
Rear Legs-Rear					<b>0,02</b>
Foot Angle					<b>-0,09</b>
Feet & Legs Score					<b>0,20</b>
F. Udder Attachment					<b>1,75</b>
Rear Udder Height					<b>3,73</b>
Rear Udder Width					<b>4,00</b>
Udder Cleft					<b>2,08</b>
Udder Depth					<b>0,78</b>
Front Teat Placement					<b>1,33</b>
Rear Teat P. Rear					<b>2,00</b>
Teat Lenght					<b>0,10</b>

-1 -0,5 0 +0,5 +1 +1,5 +2

IDEVRA RYL  
INSEME

# GHIBERTI

IT019991894454 - 543HO00244 - aAa 234



Idevra Ryl Inseme Ghiberti

**BRAMANTE**

Sound System x Hotrod

**HOTLINE**

Idevra Royal Granata MB88

**RODANAS**

Idevra Royal Grinta MB88

**TPI**  
**+2701**

**NET MERIT**  
**\$ 581**

**CHEESE MERIT**  
**\$ 599**

► **PRODUCTION TRAITS** (81% REL)

Milk	% Fat	Fat	% Protein	Protein
<b>+625 lbs</b>	<b>+0,18</b>	<b>+75</b>	<b>+0,08</b>	<b>+42</b>
K Casein <b>AA</b>		Beta Lactoglobuline <b>AB</b>		Beta Casein <b>A2A2</b>

► **HEALTH TRAITS**

SCS	<b>+2,74</b>	SCE	<b>+1,70</b>
PL	<b>+1,30</b>	DCE	<b>+2,00</b>
DPR	<b>-2,40</b>	FI	<b>-1,80</b>



► **TYPE TRAITS**

PTAT **+2,17** UDC **+2,07** FLC **+1,16**

Stature					<b>2,69</b>
Stenght					<b>0,39</b>
Body Dept					<b>0,78</b>
Dairy Form					<b>1,77</b>
Rump Angle					<b>0,70</b>
Thurl Width					<b>0,87</b>
Rear Legs-Side					<b>-0,31</b>
Rear Legs-Rear					<b>1,61</b>
Foot Angle					<b>2,46</b>
Feet & Legs Score					<b>1,60</b>
F. Udder Attachment					<b>2,86</b>
Rear Udder Height					<b>2,53</b>
Rear Udder Width					<b>2,51</b>
Udder Cleft					<b>2,43</b>
Udder Depth					<b>2,92</b>
Front Teat Placement					<b>2,43</b>
Rear Teat P. Rear					<b>2,78</b>
Teat Lenght					<b>-1,75</b>

-1 -0,5 0 +0,5 +1 +1,5 +2



RIOZZO  
INSEME

# INDRO

IT015990518306 - 543HO00245 - aAa 234



Riozzo Inseme Indro

**HOTHAND**

**TOOHOT**

**SUPERMAN**

Hotline x Montross

Go-Farm Island

KNS Inka MB85

**TPI**  
**+2619**

**NET MERIT**  
**\$ 480**

**CHEESE MERIT**  
**\$ 488**

► **PRODUCTION TRAITS** (81% REL)

Milk	% Fat	Fat	% Protein	Protein
<b>+1362 lbs</b>	<b>+0,01</b>	<b>+56</b>	<b>+0,04</b>	<b>+53</b>
K Casein <b>AE</b>		Beta Lactoglobuline <b>AB</b>		Beta Casein <b>A1A2</b>

► **HEALTH TRAITS**

SCS	<b>+2,95</b>	SCE	<b>+2,00</b>
PL	<b>+0,60</b>	DCE	<b>+2,40</b>
DPR	<b>-2,30</b>	FI	<b>-1,30</b>

► **TYPE TRAITS**

PTAT **+1,97** UDC **+2,27** FLC **+0,20**

Stature	>	2,17
Stenght	>	1,27
Body Dept	>	1,39
Dairy Form	>	1,70
Rump Angle	>	0,84
Thurl Width	>	1,19
Rear Legs-Side	>	-1,12
Rear Legs-Rear	>	1,13
Foot Angle	>	1,78
Feet & Legs Score	>	0,46
F. Udder Attachment	>	2,63
Rear Udder Height	>	3,08
Rear Udder Width	>	3,45
Udder Cleft	>	1,46
Udder Depth	>	2,10
Front Teat Placement	>	0,83
Rear Teat P. Rear	>	1,09
Teat Lenght	>	0,18



Go-Farm Toohot - Dam of Indro

**New**

BODENGO  
INSEME

# LILIUM

IT014990196057 - 543HO00305



Bodengo Inseme Liliium

**MACHONE**

**NEBULA**

**JEDI**

Milktime x Romero

C.M.E. Nebula Lexy ET  
MB85

C.M.E. Jedi Zetajones

**TPI**  
**+2799**

**NET MERIT**  
**\$ 741**

**CHEESE MERIT**  
**\$ 758**

► **PRODUCTION TRAITS** (78% REL)

Milk	% Fat	Fat	% Protein	Protein
<b>+1424 lbs</b>	<b>+0,01</b>	<b>+59</b>	<b>+0,05</b>	<b>+60</b>
K Casein <b>AB</b>		Beta Lactoglobuline <b>AA</b>		Beta Casein <b>A1A2</b>

► **HEALTH TRAITS**

SCS	<b>+2,64</b>	SCE	<b>+2,10</b>
PL	<b>+4,20</b>	DCE	<b>+2,00</b>
DPR	<b>-0,60</b>	FI	<b>-0,20</b>

► **TYPE TRAITS**

PTAT **+1,34** UDC **+1,85** FLC **+0,41**

Stature	>	0,49
Stenght	>	0,42
Body Dept	>	0,24
Dairy Form	>	0,42
Rump Angle	>	0,34
Thurl Width	>	0,91
Rear Legs-Side	>	-1,16
Rear Legs-Rear	>	0,62
Foot Angle	>	0,77
Feet & Legs Score	>	0,46
F. Udder Attachment	>	1,55
Rear Udder Height	>	2,23
Rear Udder Width	>	2,56
Udder Cleft	>	2,11
Udder Depth	>	0,96
Front Teat Placement	>	1,24
Rear Teat P. Rear	>	1,86
Teat Lenght	>	0,09



**New**CIOLFARM  
INSEME**LUDWIG**

IT017992639133 - 543HO00304

IL SEME SESSATO *Made in Italy*  
**FOEMINA**  
Sexed **ULTRA 4M**

Ciolfarm Inseme Ludwig

**CAPONE**

Renegade x Modesty

**BRAMANTE**Ciolfarm Bramante  
Soler MB85**BALISTO**Ciolfarm Balisto Soleil  
EX90**TPI**  
**+2774****NET MERIT**  
**\$ 796****CHEESE MERIT**  
**\$ 814****PRODUCTION TRAITS (78% REL)**

Milk	% Fat	Fat	% Protein	Protein
<b>+1405 lbs</b>	<b>+0,02</b>	<b>+61</b>	<b>+0,07</b>	<b>+63</b>
K Casein <b>BB</b>		Beta Lactoglobuline <b>AA</b>		Beta Casein <b>A2A2</b>

**HEALTH TRAITS**

SCS	<b>+2,70</b>	SCE	<b>+1,80</b>
PL	<b>+5,00</b>	DCE	<b>+2,00</b>
DPR	<b>-1,10</b>	FI	<b>-0,30</b>

**TYPE TRAITS**PTAT **+1,08** UDC **+0,82** FLC **+0,74**

Stature					<b>1,08</b>
Stenght					<b>0,25</b>
Body Dept					<b>0,47</b>
Dairy Form					<b>1,34</b>
Rump Angle					<b>-0,75</b>
Thurl Width					<b>-0,15</b>
Rear Legs-Side					<b>0,02</b>
Rear Legs-Rear					<b>0,97</b>
Foot Angle					<b>1,24</b>
Feet & Legs Score					<b>0,87</b>
F. Udder Attachment					<b>1,17</b>
Rear Udder Height					<b>1,65</b>
Rear Udder Width					<b>1,49</b>
Udder Cleft					<b>0,07</b>
Udder Depth					<b>1,01</b>
Front Teat Placement					<b>-0,52</b>
Rear Teat P. Rear					<b>-0,71</b>
Teat Lenght					<b>1,40</b>

ZANI  
INSEME**MACCHIAVELLI**

IT017992074001 - 543HO00223 - aAa 423

IL SEME SESSATO *Made in Italy*  
**FOEMINA**  
Sexed **ULTRA 4M**

Zani Inseme Macchiavelli

**NEBULA**

Charley x Balisto

**SILVER**Zani Silver Ambra  
MB86**SUPERSIRE**Zani Supersire Orietta  
MB87**TPI**  
**+2562****NET MERIT**  
**\$ 607****CHEESE MERIT**  
**\$ 619****PRODUCTION TRAITS (81% REL)**

Milk	% Fat	Fat	% Protein	Protein
<b>+1234 lbs</b>	<b>-0,02</b>	<b>+43</b>	<b>+0,04</b>	<b>+50</b>
K Casein <b>AB</b>		Beta Lactoglobuline <b>AA</b>		Beta Casein <b>A2A2</b>

**HEALTH TRAITS**

SCS	<b>+2,76</b>	SCE	<b>+1,50</b>
PL	<b>+3,50</b>	DCE	<b>+1,90</b>
DPR	<b>-0,30</b>	FI	<b>-0,10</b>



Zani Silver Ambra

**TYPE TRAITS**PTAT **+0,73** UDC **+0,63** FLC **+0,29**

Stature					<b>0,66</b>
Stenght					<b>0,28</b>
Body Dept					<b>0,22</b>
Dairy Form					<b>0,34</b>
Rump Angle					<b>0,10</b>
Thurl Width					<b>-0,34</b>
Rear Legs-Side					<b>0,41</b>
Rear Legs-Rear					<b>0,34</b>
Foot Angle					<b>0,52</b>
Feet & Legs Score					<b>0,43</b>
F. Udder Attachment					<b>1,03</b>
Rear Udder Height					<b>1,18</b>
Rear Udder Width					<b>0,78</b>
Udder Cleft					<b>0,07</b>
Udder Depth					<b>0,62</b>
Front Teat Placement					<b>0,23</b>
Rear Teat P. Rear					<b>-0,34</b>
Teat Lenght					<b>0,66</b>

New

ISOLABELLA  
INSEME

# MAKUMBA

IT001991424870 - 543HO00296



Isolabella Inseme Makumba

**PLINKO**

Marius x Topshot

**DEREK**

Isolabella Dogsitter ET  
GP81

**PERSEUS**

Isolabella Meghan ET

**TPI**  
**+2818**

**NET MERIT**  
**\$ 838**

**CHEESE MERIT**  
**\$ 854**

► **PRODUCTION TRAITS (79% REL)**

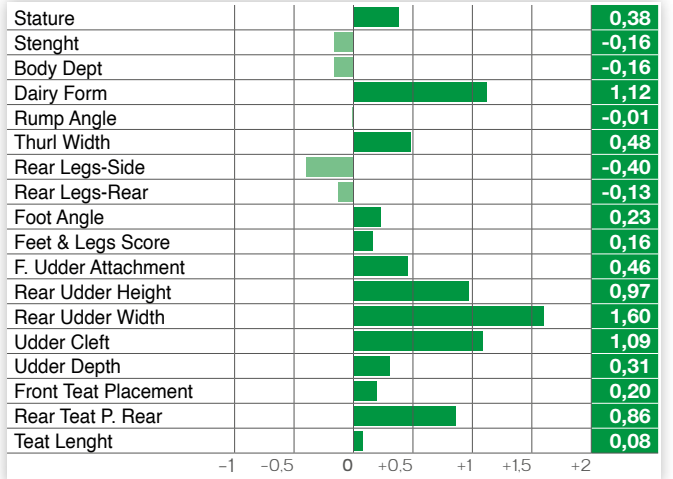
Milk	% Fat	Fat	% Protein	Protein
<b>+1206 lbs</b>	<b>+0,15</b>	<b>+89</b>	<b>+0,07</b>	<b>+58</b>
K Casein <b>AB</b>		Beta Lactoglobuline <b>AB</b>		Beta Casein <b>A2A2</b>

► **HEALTH TRAITS**

SCS	<b>+2,78</b>	SCE	<b>+1,80</b>
PL	<b>+3,70</b>	DCE	<b>+1,60</b>
DPR	<b>-0,40</b>	FI	<b>+0,10</b>

► **TYPE TRAITS**

PTAT **+0,78** UDC **+0,84** FLC **+0,02**



CIRIO  
AGRICOLA  
INSEME

# MANFREDI

IT061990879534 - 543HO00238 - aAa 243



Cirio Agricola Inseme Manfredi

**PADAWAN**

Jedi x Enforcer

**BALISTO**

Shotglass x Robust

**DONATELLO**

Robust x Planet

**TPI**  
**+2624**

**NET MERIT**  
**\$ 558**

**CHEESE MERIT**  
**\$ 566**

► **PRODUCTION TRAITS (81% REL)**

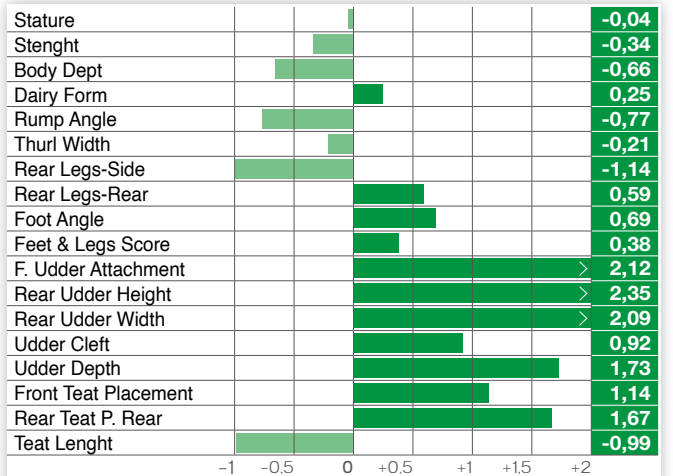
Milk	% Fat	Fat	% Protein	Protein
<b>+1349 lbs</b>	<b>-0,14</b>	<b>+12</b>	<b>+0,01</b>	<b>+46</b>
K Casein <b>AB</b>		Beta Lactoglobuline <b>AA</b>		Beta Casein <b>A2A2</b>

► **HEALTH TRAITS**

SCS	<b>+2,78</b>	SCE	<b>+1,90</b>
PL	<b>+4,80</b>	DCE	<b>+2,30</b>
DPR	<b>+2,30</b>	FI	<b>+2,60</b>

► **TYPE TRAITS**

PTAT **+1,22** UDC **+2,02** FLC **+0,45**



CIRIO  
AGRICOLA  
INSEME

## MANTRA

## TRY ME

Resolve x Profit

X

## YODA

Pine-Tree 4425Yoda  
7994

X

## DRAFTPICK

Westcoast Dpick  
Chantal 4425TPI  
**+2796**NET MERIT  
**\$ 794**CHEESE MERIT  
**\$ 815**

## ► PRODUCTION TRAITS (82% REL)

Milk	% Fat	Fat	% Protein	Protein
<b>+908 lbs</b>	<b>+0,10</b>	<b>+65</b>	<b>+0,09</b>	<b>+55</b>
K Casein <b>BB</b>		Beta Lactoglobuline <b>BB</b>		Beta Casein <b>A1A2</b>

## ► HEALTH TRAITS

SCS	<b>+2,76</b>	SCE	<b>+2,60</b>
PL	<b>+4,90</b>	DCE	<b>+2,20</b>
DPR	<b>-1,60</b>	FI	<b>-0,90</b>



IT061991006903 - 543HO00291 - aAa 432

IL SEME SESSATO *Made in Italy*  
**FOEMINA**  
Sexed **ULTRA 4M**

Cirio Agricola Inseme Mantra

## ► TYPE TRAITS

PTAT **+2,05** UDC **+1,84** FLC **+0,48**

Stature					<b>1,96</b>
Stenght					<b>0,49</b>
Body Dept					<b>0,84</b>
Dairy Form					<b>1,74</b>
Rump Angle					<b>1,17</b>
Thurl Width					<b>0,06</b>
Rear Legs-Side					<b>-0,75</b>
Rear Legs-Rear					<b>0,68</b>
Foot Angle					<b>1,25</b>
Feet & Legs Score					<b>0,90</b>
F. Udder Attachment					<b>&gt; 2,20</b>
Rear Udder Height					<b>&gt; 2,66</b>
Rear Udder Width					<b>&gt; 2,16</b>
Udder Cleft					<b>1,61</b>
Udder Depth					<b>&gt; 2,02</b>
Front Teat Placement					<b>1,28</b>
Rear Teat P. Rear					<b>1,69</b>
Teat Lenght					<b>-0,37</b>

-1 -0,5 0 +0,5 +1 +1,5 +2

GO-FARM  
INSEME

## NIBALI

## PADAWAN

Jedi x Enforcer

X

## EAGLE

Go-Farm Natasha B+84

X

## POWERBALL

Dg R Nourya MB85

TPI  
**+2443**NET MERIT  
**\$ 416**CHEESE MERIT  
**\$ 426**

## ► PRODUCTION TRAITS (82% REL)

Milk	% Fat	Fat	% Protein	Protein
<b>+899 lbs</b>	<b>-0,05</b>	<b>+20</b>	<b>+0,04</b>	<b>+39</b>
K Casein <b>BB</b>		Beta Lactoglobuline <b>AA</b>		Beta Casein <b>A2A2</b>

## ► HEALTH TRAITS

SCS	<b>+2,83</b>	SCE	<b>+1,30</b>
PL	<b>+2,70</b>	DCE	<b>+1,50</b>
DPR	<b>+2,10</b>	FI	<b>+2,10</b>



Eagle Go Farm.Casalmoreno CR

IT019991867324 - 543HO00227 - aAa 243

IL SEME SESSATO *Made in Italy*  
**FOEMINA**  
Sexed **ULTRA 4M**

Go-Farm Inseme Nibali

## ► TYPE TRAITS

PTAT **+0,51** UDC **+1,01** FLC **-0,63**

Stature					<b>1,15</b>
Stenght					<b>0,12</b>
Body Dept					<b>-0,10</b>
Dairy Form					<b>0,35</b>
Rump Angle					<b>0,84</b>
Thurl Width					<b>-0,31</b>
Rear Legs-Side					<b>-2,31</b>
Rear Legs-Rear					<b>-0,42</b>
Foot Angle					<b>0,71</b>
Feet & Legs Score					<b>-0,26</b>
F. Udder Attachment					<b>1,14</b>
Rear Udder Height					<b>1,16</b>
Rear Udder Width					<b>1,01</b>
Udder Cleft					<b>1,44</b>
Udder Depth					<b>1,66</b>
Front Teat Placement					<b>1,10</b>
Rear Teat P. Rear					<b>&gt; 2,20</b>
Teat Lenght					<b>-1,27</b>

-1 -0,5 0 +0,5 +1 +1,5 +2

GO-FARM INSEME **NOCINO**

IT019991856548 - 543HO00228 - aAa 324



**TOPNOTCH** x **EAGLE** x **POWERBALL**  
 Jedi x Lottomax x Go-Farm Natasha B+84 x DG R Nourya MB85

**TPI** +2298    **NET MERIT** \$ 306    **CHEESE MERIT** \$ 315

► **PRODUCTION TRAITS** (82% REL)

Milk	% Fat	Fat	% Protein	Protein
<b>+1064 lbs</b>	<b>-0,16</b>	<b>-5</b>	<b>+0,04</b>	<b>+45</b>
K Casein <b>BB</b>		Beta Lactoglobuline <b>AA</b>		Beta Casein <b>A1A2</b>

► **HEALTH TRAITS**

SCS	<b>+2,91</b>	SCE	<b>+1,60</b>
PL	<b>+2,00</b>	DCE	<b>+1,90</b>
DPR	<b>-0,20</b>	FI	<b>-0,10</b>



► **TYPE TRAITS**

PTAT **+0,93**    UDC **+1,05**    FLC **-0,37**

Stature					<b>1,20</b>
Stenght					<b>0,46</b>
Body Dept					<b>0,33</b>
Dairy Form					<b>0,68</b>
Rump Angle					<b>-0,39</b>
Thurl Width					<b>-0,16</b>
Rear Legs-Side					<b>-1,63</b>
Rear Legs-Rear					<b>-0,53</b>
Foot Angle					<b>0,81</b>
Feet & Legs Score					<b>0,04</b>
F. Udder Attachment					<b>1,26</b>
Rear Udder Height					<b>1,20</b>
Rear Udder Width					<b>1,47</b>
Udder Cleft					<b>0,95</b>
Udder Depth					<b>1,32</b>
Front Teat Placement					<b>0,56</b>
Rear Teat P. Rear					<b>0,57</b>
Teat Length					<b>0,12</b>

FRIGONI INSEME **PASOLINI**

IT020991496723 - 543HO00257 - aAa 342



**PADAWAN** x **GYMNAST** x **PENMANSHIP**  
 Jedi x Enforcer x Frigoni Gymnast B+83 x Agrigen Royal Penmanship Tessa B+82

**TPI** +2634    **NET MERIT** \$ 546    **CHEESE MERIT** \$ 560

► **PRODUCTION TRAITS** (81% REL)

Milk	% Fat	Fat	% Protein	Protein
<b>+1436 lbs</b>	<b>-0,11</b>	<b>+23</b>	<b>+0,05</b>	<b>+60</b>
K Casein <b>AB</b>		Beta Lactoglobuline <b>AA</b>		Beta Casein <b>A2A2</b>

► **HEALTH TRAITS**

SCS	<b>+2,78</b>	SCE	<b>+1,70</b>
PL	<b>+3,30</b>	DCE	<b>+1,70</b>
DPR	<b>+2,50</b>	FI	<b>+2,70</b>



► **TYPE TRAITS**

PTAT **+1,02**    UDC **+1,07**    FLC **-0,08**

Stature					<b>1,69</b>
Stenght					<b>0,69</b>
Body Dept					<b>0,41</b>
Dairy Form					<b>0,69</b>
Rump Angle					<b>0,19</b>
Thurl Width					<b>0,92</b>
Rear Legs-Side					<b>-1,50</b>
Rear Legs-Rear					<b>0,36</b>
Foot Angle					<b>0,91</b>
Feet & Legs Score					<b>0,28</b>
F. Udder Attachment					<b>0,90</b>
Rear Udder Height					<b>1,59</b>
Rear Udder Width					<b>1,64</b>
Udder Cleft					<b>1,76</b>
Udder Depth					<b>1,15</b>
Front Teat Placement					<b>0,81</b>
Rear Teat P. Rear					<b>1,64</b>
Teat Length					<b>-0,09</b>

AL.CO.BIA.  
INSEME

## PORTOFINO

**KUDOS**

Topnotch x Jedi

X

**CASPER**Gioia Inseme  
Edelweiss MB85

X

**MODESTY**

Holbra Malana B+83

**TPI**  
**+2703****NET MERIT**  
**\$ 538****CHEESE MERIT**  
**\$ 551**

## ► PRODUCTION TRAITS (80% REL)

Milk	% Fat	Fat	% Protein	Protein
<b>+1296 lbs</b>	<b>+0,01</b>	<b>+52</b>	<b>+0,06</b>	<b>+57</b>
K Casein <b>BB</b>		Beta Lactoglobuline <b>AB</b>		Beta Casein <b>A1A2</b>

## ► HEALTH TRAITS

SCS	<b>+2,85</b>	SCE	<b>+2,30</b>
PL	<b>+1,70</b>	DCE	<b>+1,80</b>
DPR	<b>-1,30</b>	FI	<b>-0,80</b>



Gioia Inseme Edelweiss ET - Dam of Portofino

IT034991251191 - 543HO00279 - aAa 234



AL.CO.BIA. Inseme Portofino

## ► TYPE TRAITS

PTAT **+2,32** UDC **+2,28** FLC **+0,25**

Stature					<b>2,94</b>
Stenght					<b>1,40</b>
Body Dept					<b>1,45</b>
Dairy Form					<b>1,73</b>
Rump Angle					<b>0,41</b>
Thurl Width					<b>1,27</b>
Rear Legs-Side					<b>0,29</b>
Rear Legs-Rear					<b>0,14</b>
Foot Angle					<b>1,32</b>
Feet & Legs Score					<b>1,03</b>
F. Udder Attachment					<b>3,16</b>
Rear Udder Height					<b>2,83</b>
Rear Udder Width					<b>2,84</b>
Udder Cleft					<b>2,37</b>
Udder Depth					<b>2,93</b>
Front Teat Placement					<b>1,59</b>
Rear Teat P. Rear					<b>1,91</b>
Teat Lenght					<b>-0,42</b>

-1 -0,5 0 +0,5 +1 +1,5 +2

IDEVRA  
ROYAL

## PUCCINI

**PADAWAN**

Jedi x Enforcer

X

**OCTAVIAN**Idevra Royal Pepsi  
MB85

X

**DOORMAN**Muri Doorman Trissy  
B+84**TPI**  
**+2526****NET MERIT**  
**\$ 464****CHEESE MERIT**  
**\$ 480**

## ► PRODUCTION TRAITS (82% REL)

Milk	% Fat	Fat	% Protein	Protein
<b>+754 lbs</b>	<b>-0,01</b>	<b>+27</b>	<b>+0,06</b>	<b>+42</b>
K Casein <b>AB</b>		Beta Lactoglobuline <b>AB</b>		Beta Casein <b>A2A2</b>

## ► HEALTH TRAITS

SCS	<b>+2,77</b>	SCE	<b>+2,30</b>
PL	<b>+3,20</b>	DCE	<b>+1,90</b>
DPR	<b>+1,00</b>	FI	<b>+1,60</b>



Idevra Royal Pepsi ET VG85

IT019991816277 - 543HO00230 - aAa 234



Idevra Royal Puccini

## ► TYPE TRAITS

PTAT **+1,01** UDC **+0,93** FLC **+0,05**

Stature					<b>1,47</b>
Stenght					<b>1,21</b>
Body Dept					<b>0,94</b>
Dairy Form					<b>0,82</b>
Rump Angle					<b>-0,69</b>
Thurl Width					<b>1,30</b>
Rear Legs-Side					<b>-0,49</b>
Rear Legs-Rear					<b>0,43</b>
Foot Angle					<b>0,41</b>
Feet & Legs Score					<b>0,35</b>
F. Udder Attachment					<b>1,35</b>
Rear Udder Height					<b>1,22</b>
Rear Udder Width					<b>1,38</b>
Udder Cleft					<b>0,90</b>
Udder Depth					<b>1,20</b>
Front Teat Placement					<b>0,22</b>
Rear Teat P. Rear					<b>0,82</b>
Teat Lenght					<b>-0,51</b>

-1 -0,5 0 +0,5 +1 +1,5 +2

DOTTI ENTERPRISE **RAFFAELLO**

IT036990627056 - 543HO00212 - aAa 231



Dotti Enterprise Raffaello

**ENTERPRISE** X **SILVER** X **DOORMAN**  
 Penmanship x Balisto x Dotti Silver Alessia MB88 x Dotti Doorina MB86

**TPI** +2409    **NET MERIT** \$ 317    **CHEESE MERIT** \$ 334

► **PRODUCTION TRAITS (81% REL)**

Milk	% Fat	Fat	% Protein	Protein
<b>-3 lbs</b>	<b>+0,13</b>	<b>+36</b>	<b>+0,09</b>	<b>+24</b>
K Casein <b>BB</b>		Beta Lactoglobuline <b>AA</b>		Beta Casein <b>A2A2</b>

► **HEALTH TRAITS**

SCS	<b>+2,81</b>	SCE	<b>+2,30</b>
PL	<b>+1,40</b>	DCE	<b>+1,80</b>
DPR	<b>-1,20</b>	FI	<b>-0,90</b>



La Corte di Dotti Silver

► **TYPE TRAITS**

PTAT **+1,60** UDC **+1,52** FLC **+0,94**

Stature	1,73
Stenght	0,38
Body Dept	0,88
Dairy Form	1,50
Rump Angle	1,93
Thurl Width	0,70
Rear Legs-Side	-0,48
Rear Legs-Rear	1,15
Foot Angle	1,68
Feet & Legs Score	1,24
F. Udder Attachment	1,67
Rear Udder Height	2,37
Rear Udder Width	1,85
Udder Cleft	1,29
Udder Depth	1,75
Front Teat Placement	0,75
Rear Teat P. Rear	0,98
Teat Length	0,77

IDEVRA ROYAL INSEME **ROSSINI**

IT019991894402 - 543HO00248 - aAa 234



Idevra Royal Inseme Rossini

**HOTHAND** X **BANDARES** X **RODANAS**  
 Hotline x Montroos x Inseme Aritmia B+83 x Vermunt

**TPI** +2594    **NET MERIT** \$ 560    **CHEESE MERIT** \$ 582

► **PRODUCTION TRAITS (81% REL)**

Milk	% Fat	Fat	% Protein	Protein
<b>+786 lbs</b>	<b>+0,04</b>	<b>+43</b>	<b>+0,09</b>	<b>+51</b>
K Casein <b>AA</b>		Beta Lactoglobuline <b>AA</b>		Beta Casein <b>A1A2</b>

► **HEALTH TRAITS**

SCS	<b>+2,68</b>	SCE	<b>+1,90</b>
PL	<b>+2,30</b>	DCE	<b>+2,20</b>
DPR	<b>-1,10</b>	FI	<b>-0,80</b>



► **TYPE TRAITS**

PTAT **+1,47** UDC **+1,59** FLC **+0,25**

Stature	1,28
Stenght	0,46
Body Dept	0,45
Dairy Form	1,22
Rump Angle	1,18
Thurl Width	0,01
Rear Legs-Side	-0,73
Rear Legs-Rear	0,88
Foot Angle	1,18
Feet & Legs Score	0,37
F. Udder Attachment	1,90
Rear Udder Height	2,49
Rear Udder Width	2,25
Udder Cleft	0,69
Udder Depth	1,34
Front Teat Placement	0,16
Rear Teat P. Rear	-0,04
Teat Length	-0,06

DE VOLMER  
DG RUBESCO

# RUBESCO

NL000673947046 - 543HO00208 - aAa 243



De Volmer DG Rubesco

**IMAX**

**JEDI**

**KINGBOY**

Spring x Mogul

X

Montross x Supersire

X

McCutchen x Super

**TPI**  
**+2658**

**NET MERIT**  
**\$ 629**

**CHEESE MERIT**  
**\$ 635**

► **PRODUCTION TRAITS** (82% REL)

Milk	% Fat	Fat	% Protein	Protein
<b>+1688 lbs</b>	<b>+0,00</b>	<b>+66</b>	<b>+0,04</b>	<b>+63</b>
K Casein <b>AA</b>		Beta Lactoglobuline <b>AB</b>		Beta Casein <b>A2A2</b>

► **HEALTH TRAITS**

SCS	<b>+3,00</b>	SCE	<b>+2,00</b>
PL	<b>+2,10</b>	DCE	<b>+2,00</b>
DPR	<b>-2,60</b>	FI	<b>-1,60</b>



► **TYPE TRAITS**

PTAT **+1,41** UDC **+1,48** FLC **+0,09**

Stature				<b>1,68</b>
Stenght				<b>1,41</b>
Body Dept				<b>0,99</b>
Dairy Form				<b>0,68</b>
Rump Angle				<b>-0,31</b>
Thurl Width				<b>1,66</b>
Rear Legs-Side				<b>-1,43</b>
Rear Legs-Rear				<b>0,53</b>
Foot Angle				<b>1,53</b>
Feet & Legs Score				<b>0,39</b>
F. Udder Attachment				<b>1,94</b>
Rear Udder Height				<b>1,89</b>
Rear Udder Width				<b>2,13</b>
Udder Cleft				<b>0,65</b>
Udder Depth				<b>1,83</b>
Front Teat Placement				<b>0,42</b>
Rear Teat P. Rear				<b>0,69</b>
Teat Lenght				<b>-0,20</b>

**New**

SCOTTA  
INSEME

# SALUZZO

IT004992425480 - 543HO00300



Scotta Inseme Saluzzo

**PLINKO**

**DATALINE**

**SUPERSTAR**

Marius x Topshot

X

Scotta Inseme Ceffs  
ET MB86

X

Zaqqqa MB85

**TPI**  
**+2750**

**NET MERIT**  
**\$ 841**

**CHEESE MERIT**  
**\$ 864**

► **PRODUCTION TRAITS** (79% REL)

Milk	% Fat	Fat	% Protein	Protein
<b>+1254 lbs</b>	<b>+0,08</b>	<b>+72</b>	<b>+0,08</b>	<b>+62</b>
K Casein <b>AA</b>		Beta Lactoglobuline <b>AB</b>		Beta Casein <b>A2A2</b>

► **HEALTH TRAITS**

SCS	<b>+2,54</b>	SCE	<b>+1,50</b>
PL	<b>+4,50</b>	DCE	<b>+1,40</b>
DPR	<b>-0,20</b>	FI	<b>+0,30</b>



Zaqqqa

► **TYPE TRAITS**

PTAT **-0,01** UDC **+0,31** FLC **-0,72**

Stature				<b>0,52</b>
Stenght				<b>-0,39</b>
Body Dept				<b>-0,27</b>
Dairy Form				<b>0,97</b>
Rump Angle				<b>1,74</b>
Thurl Width				<b>-0,04</b>
Rear Legs-Side				<b>-1,07</b>
Rear Legs-Rear				<b>-0,83</b>
Foot Angle				<b>-0,35</b>
Feet & Legs Score				<b>-0,45</b>
F. Udder Attachment				<b>-0,08</b>
Rear Udder Height				<b>0,54</b>
Rear Udder Width				<b>0,97</b>
Udder Cleft				<b>0,68</b>
Udder Depth				<b>0,10</b>
Front Teat Placement				<b>-0,03</b>
Rear Teat P. Rear				<b>0,43</b>
Teat Lenght				<b>0,35</b>



DG DV  
INSEME  
SANZIO

# SANZIO

NL000621264063 - 543HO00232



DG DV Inseme Sanzio

### CLASSIC

Charley x Silver

### JEDI

Montross x Supersire

### KINGBOY

McCutchen x Super

**TPI**  
**+2656**

**NET MERIT**  
**\$ 737**

**CHEESE MERIT**  
**\$ 751**

#### ► PRODUCTION TRAITS (80% REL)

Milk	% Fat	Fat	% Protein	Protein
<b>+1144 lbs</b>	<b>+0,07</b>	<b>+63</b>	<b>+0,05</b>	<b>+50</b>
K Casein <b>AA</b>		Beta Lactoglobuline <b>AA</b>		Beta Casein <b>A1A2</b>

#### ► HEALTH TRAITS

SCS	<b>+2,74</b>	SCE	<b>+2,00</b>
PL	<b>+3,40</b>	DCE	<b>+2,50</b>
DPR	<b>-1,30</b>	FI	<b>-1,00</b>

#### ► TYPE TRAITS

PTAT **+0,80** UDC **+1,39** FLC **+0,21**

Stature									<b>0,07</b>
Stenght									<b>-0,66</b>
Body Dept									<b>-0,47</b>
Dairy Form									<b>0,74</b>
Rump Angle									<b>0,30</b>
Thurl Width									<b>-0,39</b>
Rear Legs-Side									<b>-1,44</b>
Rear Legs-Rear									<b>0,06</b>
Foot Angle									<b>0,84</b>
Feet & Legs Score									<b>0,27</b>
F. Udder Attachment									<b>1,09</b>
Rear Udder Height									<b>1,97</b>
Rear Udder Width									<b>1,56</b>
Udder Cleft									<b>1,29</b>
Udder Depth									<b>0,96</b>
Front Teat Placement									<b>0,93</b>
Rear Teat P. Rear									<b>1,50</b>
Teat Lenght									<b>-1,51</b>

-1 -0,5 0 +0,5 +1 +1,5 +2

GO-FARM

# SCANSANO

IT019991766043 - 543HO00210 - aAa 423516



Go-Farm Scansano

### PADAWAN

Jedi x Enforcer

### RUBICON

Sfh Saphir B+84

### BALISTO

Kns Sinballi EX90

**TPI**  
**+2591**

**NET MERIT**  
**\$ 627**

**CHEESE MERIT**  
**\$ 637**

#### ► PRODUCTION TRAITS (80% REL)

Milk	% Fat	Fat	% Protein	Protein
<b>+1185 lbs</b>	<b>-0,06</b>	<b>+28</b>	<b>+0,04</b>	<b>+49</b>
K Casein <b>BB</b>		Beta Lactoglobuline <b>AA</b>		Beta Casein <b>A2A2</b>

#### ► HEALTH TRAITS

SCS	<b>+2,86</b>	SCE	<b>+2,30</b>
PL	<b>+4,80</b>	DCE	<b>+1,60</b>
DPR	<b>+1,10</b>	FI	<b>+1,60</b>

#### ► TYPE TRAITS

PTAT **+0,54** UDC **+1,03** FLC **+0,37**

Stature									<b>0,13</b>
Stenght									<b>-0,18</b>
Body Dept									<b>-0,54</b>
Dairy Form									<b>0,19</b>
Rump Angle									<b>-0,73</b>
Thurl Width									<b>-0,02</b>
Rear Legs-Side									<b>-0,21</b>
Rear Legs-Rear									<b>0,68</b>
Foot Angle									<b>0,28</b>
Feet & Legs Score									<b>0,29</b>
F. Udder Attachment									<b>1,27</b>
Rear Udder Height									<b>0,99</b>
Rear Udder Width									<b>0,87</b>
Udder Cleft									<b>0,52</b>
Udder Depth									<b>1,16</b>
Front Teat Placement									<b>0,22</b>
Rear Teat P. Rear									<b>1,02</b>
Teat Lenght									<b>0,17</b>

-1 -0,5 0 +0,5 +1 +1,5 +2



GO-FARM

SILLA

IT019991792584 - 543HO00234 - aAa 234

## SOUND SYSTEM

Silver x Supersire

## FRANCHISE

Go-Farm Shanghai  
MB87

## SPEAKER

Go-Farm Saphira  
B+84TPI  
**+2625**NET MERIT  
**\$ 579**CHEESE MERIT  
**\$ 590**

Go-Farm Silla

## ► PRODUCTION TRAITS (82% REL)

Milk	% Fat	Fat	% Protein	Protein
<b>+861 lbs</b>	<b>+0,09</b>	<b>+60</b>	<b>+0,05</b>	<b>+40</b>
K Casein <b>BE</b>		Beta Lactoglobuline <b>AA</b>		Beta Casein <b>A1A2</b>

## ► HEALTH TRAITS

SCS	<b>+2,89</b>	SCE	<b>+2,20</b>
PL	<b>+2,30</b>	DCE	<b>+1,90</b>
DPR	<b>-0,20</b>	FI	<b>+0,40</b>

## ► TYPE TRAITS

PTAT **+1,22** UDC **+1,15** FLC **+0,49**

Stature	1,74
Stenght	0,72
Body Dept	0,99
Dairy Form	1,24
Rump Angle	0,54
Thurl Width	0,75
Rear Legs-Side	0,01
Rear Legs-Rear	0,65
Foot Angle	1,31
Feet & Legs Score	0,83
F. Udder Attachment	1,59
Rear Udder Height	2,21
Rear Udder Width	1,53
Udder Cleft	0,48
Udder Depth	1,07
Front Teat Placement	0,44
Rear Teat P. Rear	0,46
Teat Length	0,14

-1 -0,5 0 +0,5 +1 +1,5 +2

ISOLABELLA  
INSEME

SONIK

IT001991379357 - 543HO00289 - aAa 243

 IL SEME SESSATO *Made in Italy*  
**FOEMINA**  
 Sexed **ULTRA 4M**

## MACHONE

Milktime x Romero

## SOUNDSYSTEM

Baruf Inseme S.S.  
Sunrise B+84

## FONTAINE

Baruf Fontaine Sunrise  
MB87TPI  
**+2702**NET MERIT  
**\$ 667**CHEESE MERIT  
**\$ 680**

Isolabella Inseme Sonik

## ► PRODUCTION TRAITS (79% REL)

Milk	% Fat	Fat	% Protein	Protein
<b>+1056 lbs</b>	<b>+0,11</b>	<b>+73</b>	<b>+0,06</b>	<b>+51</b>
K Casein <b>AB</b>		Beta Lactoglobuline <b>AA</b>		Beta Casein <b>A2A2</b>

## ► HEALTH TRAITS

SCS	<b>+2,85</b>	SCE	<b>+2,50</b>
PL	<b>+2,10</b>	DCE	<b>+2,50</b>
DPR	<b>-1,50</b>	FI	<b>-1,10</b>

## ► TYPE TRAITS

PTAT **+1,77** UDC **+1,73** FLC **-0,01**

Stature	1,40
Stenght	0,48
Body Dept	0,93
Dairy Form	2,33
Rump Angle	-0,04
Thurl Width	1,35
Rear Legs-Side	0,55
Rear Legs-Rear	0,44
Foot Angle	0,39
Feet & Legs Score	0,25
F. Udder Attachment	1,72
Rear Udder Height	2,52
Rear Udder Width	2,50
Udder Cleft	1,50
Udder Depth	1,24
Front Teat Placement	1,18
Rear Teat P. Rear	1,36
Teat Length	-0,30

-1 -0,5 0 +0,5 +1 +1,5 +2



Baruf Fontaine Sunrise VG87

GO-FARM **SORRENTO**

IT019991728974 - 543HO00192 - aAa 324156



Go-Farm Sorrento

**HOTLINE**

Hotrod x Mogul

**BATTLECRY**

Go-Farm Smack GP82

**DOORMAN**

Go-Farm Sanwood VG86

<b>TPI</b> <b>+2617</b>	<b>NET MERIT</b> <b>\$ 484</b>	<b>CHEESE MERIT</b> <b>\$ 504</b>
----------------------------	-----------------------------------	--------------------------------------

► **PRODUCTION TRAITS (81% REL)**

Milk <b>+397 lbs</b>	% Fat <b>+0,23</b>	Fat <b>+80</b>	% Protein <b>+0,09</b>	Protein <b>+39</b>
K Casein <b>AB</b>		Beta Lactoglobuline <b>AA</b>		Beta Casein <b>A2A2</b>

► **HEALTH TRAITS**

SCS	<b>+2,74</b>	SCE	<b>+1,80</b>
PL	<b>-0,50</b>	DCE	<b>+1,90</b>
DPR	<b>-2,10</b>	FI	<b>-1,60</b>



► **TYPE TRAITS**

PTAT **+1,47** UDC **+1,41** FLC **+1,33**

Stature					<b>1,41</b>
Stenght					<b>0,51</b>
Body Dept					<b>0,98</b>
Dairy Form					<b>1,66</b>
Rump Angle					<b>-0,90</b>
Thurl Width					<b>0,80</b>
Rear Legs-Side					<b>-0,49</b>
Rear Legs-Rear					<b>2,04</b>
Foot Angle					<b>1,56</b>
Feet & Legs Score					<b>1,39</b>
F. Udder Attachment					<b>1,85</b>
Rear Udder Height					<b>1,54</b>
Rear Udder Width					<b>2,15</b>
Udder Cleft					<b>1,40</b>
Udder Depth					<b>1,32</b>
Front Teat Placement					<b>0,79</b>
Rear Teat P. Rear					<b>1,11</b>
Teat Lenght					<b>0,19</b>

MOLINADAIRY INSEME **SPRINTER**

IT098990800801 - 543HO00274 - aAa 243



Molinadairy Inseme Sprinter

**SOLUTION**

Frazzled x Rubicon

**SOUND SYSTEM**

Molinadairy Macchiaapua B+83

**GAMBLER**

Molinadairy Lella MB86

<b>TPI</b> <b>+2549</b>	<b>NET MERIT</b> <b>\$ 601</b>	<b>CHEESE MERIT</b> <b>\$ 611</b>
----------------------------	-----------------------------------	--------------------------------------

► **PRODUCTION TRAITS (81% REL)**

Milk <b>+844 lbs</b>	% Fat <b>+0,04</b>	Fat <b>+43</b>	% Protein <b>+0,03</b>	Protein <b>+34</b>
K Casein <b>BB</b>		Beta Lactoglobuline <b>AB</b>		Beta Casein <b>A2A2</b>

► **HEALTH TRAITS**

SCS	<b>+2,77</b>	SCE	<b>+2,50</b>
PL	<b>+5,10</b>	DCE	<b>+1,80</b>
DPR	<b>-0,30</b>	FI	<b>+0,20</b>



► **TYPE TRAITS**

PTAT **+0,65** UDC **+1,19** FLC **-0,04**

Stature					<b>0,65</b>
Stenght					<b>-0,53</b>
Body Dept					<b>-0,97</b>
Dairy Form					<b>-0,49</b>
Rump Angle					<b>1,54</b>
Thurl Width					<b>0,36</b>
Rear Legs-Side					<b>0,20</b>
Rear Legs-Rear					<b>-0,53</b>
Foot Angle					<b>0,93</b>
Feet & Legs Score					<b>0,23</b>
F. Udder Attachment					<b>2,04</b>
Rear Udder Height					<b>1,03</b>
Rear Udder Width					<b>0,40</b>
Udder Cleft					<b>0,79</b>
Udder Depth					<b>2,20</b>
Front Teat Placement					<b>1,75</b>
Rear Teat P. Rear					<b>1,54</b>
Teat Lenght					<b>-1,69</b>

ZANI INSEME

## STRADIVARI

## DREAM

Expresso x Montross

## SOUND SYSTEM

Zani Soundsystem  
Nora MB85

## OCTAVIAN

Zani Octavian Noemy  
MB88TPI  
**+2616**NET MERIT  
**\$ 482**CHEESE MERIT  
**\$ 500**

## ► PRODUCTION TRAITS (81% REL)

Milk	% Fat	Fat	% Protein	Protein
<b>+780 lbs</b>	<b>+0,05</b>	<b>+44</b>	<b>+0,08</b>	<b>+48</b>
K Casein <b>BB</b>		Beta Lactoglobuline <b>AA</b>		Beta Casein <b>A1A1</b>

## ► HEALTH TRAITS

SCS	<b>+2,79</b>	SCE	<b>+2,20</b>
PL	<b>+2,30</b>	DCE	<b>+2,30</b>
DPR	<b>+0,70</b>	FI	<b>+1,00</b>



IT017992167089 - 543HO00237 - aAa 243165

 IL SOGGETTO *Made in Italy*  
**FOEMINA**  
 Sexed **ULTRA 4M**


## ► TYPE TRAITS

PTAT **+1,31** UDC **+1,39** FLC **+0,12**

Stature					<b>2,21</b>
Stenght					<b>1,30</b>
Body Dept					<b>0,65</b>
Dairy Form					<b>0,10</b>
Rump Angle					<b>-0,12</b>
Thurl Width					<b>0,87</b>
Rear Legs-Side					<b>-1,07</b>
Rear Legs-Rear					<b>0,43</b>
Foot Angle					<b>2,12</b>
Feet & Legs Score					<b>0,54</b>
F. Udder Attachment					<b>2,34</b>
Rear Udder Height					<b>2,40</b>
Rear Udder Width					<b>1,50</b>
Udder Cleft					<b>0,10</b>
Udder Depth					<b>2,63</b>
Front Teat Placement					<b>-0,64</b>
Rear Teat P. Rear					<b>-0,78</b>
Teat Lenght					<b>0,76</b>

-1 -0,5 0 +0,5 +1 +1,5 +2

MIRABELL  
INSEME

## SUPERFAST

## MOTIVATED

Padawan x Duke

## TOPNOTCH

Mirabell TPCH Story

## MONTEREY

Mirabell MNTR Sulley  
MB86TPI  
**+2748**NET MERIT  
**\$ 728**CHEESE MERIT  
**\$ 747**

## ► PRODUCTION TRAITS (80% REL)

Milk	% Fat	Fat	% Protein	Protein
<b>+1259 lbs</b>	<b>+0,07</b>	<b>+68</b>	<b>+0,08</b>	<b>+63</b>
K Casein <b>BE</b>		Beta Lactoglobuline <b>AB</b>		Beta Casein <b>A1A1</b>

## ► HEALTH TRAITS

SCS	<b>+2,79</b>	SCE	<b>+2,20</b>
PL	<b>+3,70</b>	DCE	<b>+2,50</b>
DPR	<b>-0,90</b>	FI	<b>-0,30</b>

IT917992526791 - 543HO00287 - aAa 234



## ► TYPE TRAITS

PTAT **+1,41** UDC **+0,98** FLC **-0,27**

Stature					<b>1,24</b>
Stenght					<b>0,65</b>
Body Dept					<b>0,91</b>
Dairy Form					<b>1,96</b>
Rump Angle					<b>-0,69</b>
Thurl Width					<b>1,10</b>
Rear Legs-Side					<b>0,28</b>
Rear Legs-Rear					<b>-0,28</b>
Foot Angle					<b>0,01</b>
Feet & Legs Score					<b>0,29</b>
F. Udder Attachment					<b>0,85</b>
Rear Udder Height					<b>1,73</b>
Rear Udder Width					<b>2,17</b>
Udder Cleft					<b>0,98</b>
Udder Depth					<b>0,46</b>
Front Teat Placement					<b>-0,07</b>
Rear Teat P. Rear					<b>0,49</b>
Teat Lenght					<b>0,90</b>

-1 -0,5 0 +0,5 +1 +1,5 +2

SABBIONA INSEME **TANTUM**

IT098990744592 - 543HO00249 - aAa 234



Sabbiona Inseme Tantum

**DISCJOCKEY** Fortune x Monterey  
**APPLICABLE** Sabbiona Tania EX92  
**MASCALESE** Go-Farm Tashira MB89

**TPI** +2258  
**NET MERIT** \$ 57  
**CHEESE MERIT** \$ 71

► **PRODUCTION TRAITS (82% REL)**

Milk <b>-397 lbs</b>	% Fat <b>+0,04</b>	Fat <b>-3</b>	% Protein <b>+0,07</b>	Protein <b>+7</b>
K Casein <b>AE</b>		Beta Lactoglobuline <b>AA</b>		Beta Casein <b>A1A1</b>

► **HEALTH TRAITS**

SCS	<b>+2,83</b>	SCE	<b>+2,80</b>
PL	<b>+1,20</b>	DCE	<b>+2,50</b>
DPR	<b>+0,10</b>	FI	<b>+0,10</b>



► **TYPE TRAITS**

PTAT **+1,88** UDC **+2,74** FLC **+0,62**

Stature	>	2,59
Stenght		1,23
Body Dept		0,50
Dairy Form	<	-0,74
Rump Angle		0,42
Thurl Width		1,23
Rear Legs-Side	<	-2,33
Rear Legs-Rear		1,49
Foot Angle	>	2,93
Feet & Legs Score		1,01
F. Udder Attachment	>	3,91
Rear Udder Height	>	3,41
Rear Udder Width		1,89
Udder Cleft		1,84
Udder Depth	>	4,53
Front Teat Placement		1,20
Rear Teat P. Rear		1,31
Teat Lenght	<	-0,56

PISCHI INSEME **TIALOCO**

IT016990900821 - 543HO00295 - aAa 153



Cambiano Chapeau Zape MB89

**MACHONE** Milktime x Romero  
**REDROCK** Inseme Clara MB86  
**VANHALEN** Vanhalen MB87

**TPI** +2701  
**NET MERIT** \$ 676  
**CHEESE MERIT** \$ 690

► **PRODUCTION TRAITS (78% REL)**

Milk <b>+1026 lbs</b>	% Fat <b>-0,05</b>	Fat <b>+26</b>	% Protein <b>+0,02</b>	Protein <b>+39</b>
K Casein <b>BB</b>		Beta Lactoglobuline <b>AA</b>		Beta Casein <b>A1A2</b>

► **HEALTH TRAITS**

SCS	<b>+2,51</b>	SCE	<b>+1,70</b>
PL	<b>+5,90</b>	DCE	<b>+1,40</b>
DPR	<b>+2,00</b>	FI	<b>+1,90</b>



► **TYPE TRAITS**

PTAT **+1,57** UDC **+1,98** FLC **-0,04**

Stature		1,18
Stenght		0,26
Body Dept		0,46
Dairy Form		1,25
Rump Angle		1,37
Thurl Width		0,35
Rear Legs-Side	<	-1,11
Rear Legs-Rear		-0,08
Foot Angle		0,66
Feet & Legs Score		0,30
F. Udder Attachment	>	2,34
Rear Udder Height	>	2,50
Rear Udder Width	>	2,35
Udder Cleft		1,43
Udder Depth		1,81
Front Teat Placement		1,21
Rear Teat P. Rear		0,45
Teat Lenght	<	-0,08

CORVINI  
TELESFORO

## TELESFORO

IT098990685193 - 543HO00235 - aAa 243


 FOEMINA  
Sexed **ULTRA**

## SOUND SYSTEM

Silver x Supersire

## DERWOOD

Doorman x Man-Oman

## DEMPSEY

Goldwyn x Derry

TPI  
**+2519**NET MERIT  
**\$ 449**CHEESE MERIT  
**\$ 460**

## ► PRODUCTION TRAITS (81% REL)

Milk	% Fat	Fat	% Protein	Protein
<b>+935 lbs</b>	<b>+0,03</b>	<b>+45</b>	<b>+0,08</b>	<b>+51</b>
K Casein <b>BE</b>		Beta Lactoglobuline <b>AA</b>		Beta Casein <b>A1A2</b>

## ► HEALTH TRAITS

SCS	<b>+3,10</b>	SCE	<b>+2,30</b>
PL	<b>+0,50</b>	DCE	<b>+2,50</b>
DPR	<b>-1,30</b>	FI	<b>-0,90</b>

## ► TYPE TRAITS

 PTAT **+1,69** UDC **+1,72** FLC **+0,41**

Stature					<b>1,26</b>
Stenght					<b>0,61</b>
Body Dept					<b>1,06</b>
Dairy Form					<b>2,07</b>
Rump Angle					<b>-0,58</b>
Thurl Width					<b>0,75</b>
Rear Legs-Side					<b>1,07</b>
Rear Legs-Rear					<b>0,52</b>
Foot Angle					<b>0,72</b>
Feet & Legs Score					<b>0,71</b>
F. Udder Attachment					<b>1,49</b>
Rear Udder Height					<b>2,98</b>
Rear Udder Width					<b>2,59</b>
Udder Cleft					<b>1,36</b>
Udder Depth					<b>0,71</b>
Front Teat Placement					<b>0,96</b>
Rear Teat P. Rear					<b>1,29</b>
Teat Lenght					<b>-0,31</b>

SABBIONA  
INSEME

## TSUNAMI

IT098990806252 - 543HO00288

## KONRAD

Hotjob x Jedi

## DISCJOCKEY

Sabbiona Magic MB86

## APPLICABLE

Sabbiona Tania EX92

TPI  
**+2507**NET MERIT  
**\$ 303**CHEESE MERIT  
**\$ 323**

## ► PRODUCTION TRAITS (79% REL)

Milk	% Fat	Fat	% Protein	Protein
<b>-55 lbs</b>	<b>+0,09</b>	<b>+22</b>	<b>+0,10</b>	<b>+25</b>
K Casein <b>AB</b>		Beta Lactoglobuline <b>AB</b>		Beta Casein <b>A1A1</b>

## ► HEALTH TRAITS

SCS	<b>+2,77</b>	SCE	<b>+2,30</b>
PL	<b>+2,80</b>	DCE	<b>+2,50</b>
DPR	<b>+0,20</b>	FI	<b>+0,50</b>

## ► TYPE TRAITS

 PTAT **+2,39** UDC **+2,73** FLC **+0,27**

Stature					<b>2,97</b>
Stenght					<b>1,82</b>
Body Dept					<b>1,23</b>
Dairy Form					<b>0,06</b>
Rump Angle					<b>-0,32</b>
Thurl Width					<b>1,23</b>
Rear Legs-Side					<b>-2,06</b>
Rear Legs-Rear					<b>1,03</b>
Foot Angle					<b>2,48</b>
Feet & Legs Score					<b>0,82</b>
F. Udder Attachment					<b>3,73</b>
Rear Udder Height					<b>3,65</b>
Rear Udder Width					<b>2,96</b>
Udder Cleft					<b>1,49</b>
Udder Depth					<b>3,85</b>
Front Teat Placement					<b>1,68</b>
Rear Teat P. Rear					<b>1,67</b>
Teat Lenght					<b>-0,89</b>

**New**

AL.CO.BIA.  
INSEME

# VALE-T

IT034991319931 - 543HO00302



AL.CO.BIA. Inseme Vale-T

**TREATY**

Riveting x Jedi

X

**PANAMA**

Al.Co.Bia. Panama  
Arilyn GP80

X

**CASPER**

Al.Co.Bia. Casper  
Mania MB88

**TPI**  
**+2693**

**NET MERIT**  
**\$ 643**

**CHEESE MERIT**  
**\$ 661**

► **PRODUCTION TRAITS (78% REL)**

Milk <b>+770 lbs</b>	% Fat <b>+0,06</b>	Fat <b>+46</b>	% Protein <b>+0,07</b>	Protein <b>+43</b>
K Casein <b>AB</b>		Beta Lactoglobuline <b>AA</b>		Beta Casein <b>A2A2</b>

► **HEALTH TRAITS**

SCS <b>+2,65</b>	SCE <b>+2,50</b>	PL <b>+4,60</b>	DCE <b>+2,60</b>	DPR <b>-0,20</b>	FI <b>+0,30</b>
---------------------	---------------------	--------------------	---------------------	---------------------	--------------------



► **TYPE TRAITS**

PTAT **+1,67** UDC **+2,03** FLC **+0,28**

Stature					<b>1,91</b>
Stenght					<b>0,42</b>
Body Dept					<b>0,39</b>
Dairy Form					<b>1,03</b>
Rump Angle					<b>0,62</b>
Thurl Width					<b>0,53</b>
Rear Legs-Side					<b>-0,96</b>
Rear Legs-Rear					<b>0,28</b>
Foot Angle					<b>1,46</b>
Feet & Legs Score					<b>0,74</b>
F. Udder Attachment					<b>&gt; 2,60</b>
Rear Udder Height					<b>&gt; 2,82</b>
Rear Udder Width					<b>&gt; 2,15</b>
Udder Cleft					<b>1,19</b>
Udder Depth					<b>&gt; 2,64</b>
Front Teat Placement					<b>0,70</b>
Rear Teat P. Rear					<b>1,06</b>
Teat Lenght					<b>-0,70</b>

**New**

DELLAROSSA  
INSEME

# WODOO

IT004992267916 - 543HO00299 - aAa 234



Dellarossa Inseme Wodoo

**ZAZZLE**

Marius x Topshot

X

**ACHIEVER**

Juniper-Jlc Achievr  
Wish-ET

X

**DELTA**

Ttm Delta Wonder  
Woman-ET MB88

**TPI**  
**+2836**

**NET MERIT**  
**\$ 881**

**CHEESE MERIT**  
**\$ 889**

► **PRODUCTION TRAITS (79% REL)**

Milk <b>+1220 lbs</b>	% Fat <b>+0,21</b>	Fat <b>+109</b>	% Protein <b>+0,03</b>	Protein <b>+47</b>
K Casein <b>BE</b>		Beta Lactoglobuline <b>AB</b>		Beta Casein <b>A1A1</b>

► **HEALTH TRAITS**

SCS <b>+2,88</b>	SCE <b>+2,00</b>	PL <b>+2,50</b>	DCE <b>+1,80</b>	DPR <b>-2,30</b>	FI <b>-1,60</b>
---------------------	---------------------	--------------------	---------------------	---------------------	--------------------

► **TYPE TRAITS**

PTAT **+1,60** UDC **+1,52** FLC **-0,13**

Stature					<b>0,97</b>
Stenght					<b>-0,26</b>
Body Dept					<b>0,62</b>
Dairy Form					<b>&gt; 2,83</b>
Rump Angle					<b>0,51</b>
Thurl Width					<b>0,65</b>
Rear Legs-Side					<b>1,01</b>
Rear Legs-Rear					<b>-0,57</b>
Foot Angle					<b>-0,18</b>
Feet & Legs Score					<b>0,33</b>
F. Udder Attachment					<b>1,44</b>
Rear Udder Height					<b>&gt; 2,18</b>
Rear Udder Width					<b>&gt; 2,48</b>
Udder Cleft					<b>1,32</b>
Udder Depth					<b>0,69</b>
Front Teat Placement					<b>1,48</b>
Rear Teat P. Rear					<b>1,68</b>
Teat Lenght					<b>-0,78</b>



# RED AND RF TOP 10

Naab Code	Name	A2A2	KBB	TPI	NM\$	Milk (lbs)	Fat (lbs)	Fat %	Prot. (lbs)	Prot. %	CFP	SCS	PL	DPR	SCE	LIV	GL	FI	PTAT	UDC	FLC	Teat Length
543H000292	<b>KING RED P</b>	A2A2	AA	<b>2736</b>	699	934	50	0,05	44	0,05	94	2,70	4,80	1,70	1,40	1,70	-1,30	1,80	0,98	1,20	1,48	-0,30
543H000253	<b>APPIUS RED</b>	A1A1	BE	<b>2694</b>	809	685	45	0,07	43	0,08	88	2,81	6,10	1,00	1,30	2,60	-2,00	1,10	0,40	1,07	1,28	-0,80
543H000306	<b>ATHOS RED</b>	A1A2	AA	<b>2664</b>	717	926	44	0,03	33	0,01	77	2,64	6,50	1,50	1,20	2,70	-1,60	1,70	0,52	1,13	1,05	-0,10
543H000255	<b>ALCEROSSO</b>	A1A2	AB	<b>2654</b>	769	1153	69	0,08	52	0,06	121	2,91	3,90	-1,30	1,80	0,60	-1,50	-1,10	0,86	0,90	0,37	0,20
543H000282	<b>WALLY RED P</b>	A2A2	BB	<b>2644</b>	683	962	69	0,11	46	0,06	115	3,01	3,20	-2,20	1,60	2,30	-3,00	-1,40	1,15	1,28	0,97	-0,40
543H000272	<b>KYRIOS</b>	A1A2	AB	<b>2625</b>	525	1451	21	-0,12	44	0,00	65	2,60	4,70	1,50	1,70	1,80	-1,10	1,60	1,44	1,36	0,64	0,40
543H000275	<b>DIABOLO ROSSO</b>	A2A2	AB	<b>2602</b>	528	1099	51	0,03	48	0,05	99	2,74	2,30	1,70	1,50	-2,20	-1,00	2,10	0,88	0,47	0,09	1,90
543H000271	<b>RITMO FR</b>	A1A2	BB	<b>2592</b>	543	617	57	0,12	34	0,05	91	2,79	3,00	-1,40	2,00	0,30	-1,70	-0,90	1,44	1,81	0,51	-1,20
543H000219	<b>BARONE ROSSO</b>	A1A2	BB	<b>2552</b>	445	1014	47	0,03	51	0,07	98	2,85	1,30	-1,10	2,10	-2,30	-2,60	-0,70	1,53	1,42	0,26	1,80
543H000246	<b>SOGNO ROSSO</b>	A2A2	AB	<b>2292</b>	293	-120	20	0,09	15	0,07	35	2,67	2,60	-0,20	1,90	-1,20	-0,50	0,20	0,71	0,86	0,22	0,10

USDA 12/2022

A **RED** dream





**Polled**

IT017992284863 - 543HO00255 - aAa 342

IL SEME SESSATO *Made in Italy*  
**FOEMINA**  
Sexed **ULTRA**

ZANI INSEME **ALCEROSSO PR**

**SOLITAIR P** X **MISSION P** X **SILVER**  
Mr Salvatore x Balisto X Zani Mission P Ramina MB85 X Zani Silver Ambra MB86

**TPI** +2654    **NET MERIT** \$ 769    **CHEESE MERIT** \$ 780



Zani Inseme Alcerosso

► **PRODUCTION TRAITS** (81% REL)

Milk	% Fat	Fat	% Protein	Protein
<b>+1153 lbs</b>	<b>+0,08</b>	<b>+69</b>	<b>+0,06</b>	<b>+52</b>
K Casein <b>AB</b>		Beta Lactoglobuline <b>AA</b>		Beta Casein <b>A1A2</b>

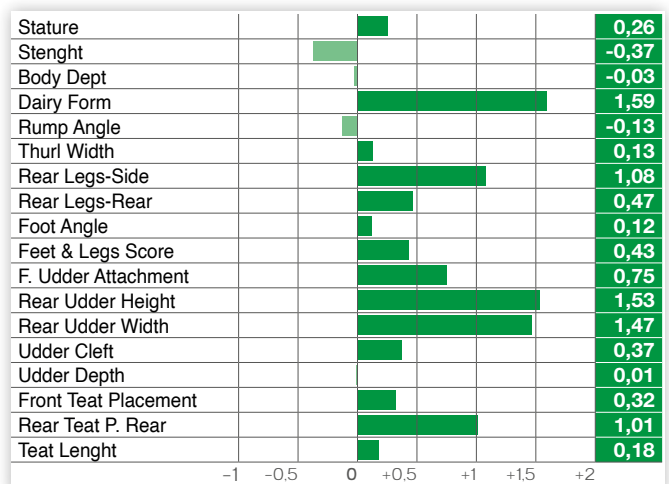
► **HEALTH TRAITS**

SCS	<b>+2,91</b>	SCE	<b>+1,80</b>
PL	<b>+3,90</b>	DCE	<b>+2,50</b>
DPR	<b>-1,30</b>	FI	<b>-1,10</b>



► **TYPE TRAITS**

PTAT **+0,86**    UDC **+0,90**    FLC **+0,37**



LUIS-OOH INSEME **APPIUS RED PR**

**Polled**

IT018990237944 - 543HO00253 - aAa 432

IL SEME SESSATO *Made in Italy*  
**FOEMINA**  
Sexed **ULTRA 4M**

**SOLITAIR P** X **APPRENTICE** X **DELTA**  
Mr Salvatore x Balisto X Luis-Ooh Suning X Hermosa Delta Luigia B+82

**TPI** +2694    **NET MERIT** \$ 809    **CHEESE MERIT** \$ 826



Luis-Ooh Inseme Appius Red Cd

► **PRODUCTION TRAITS** (80% REL)

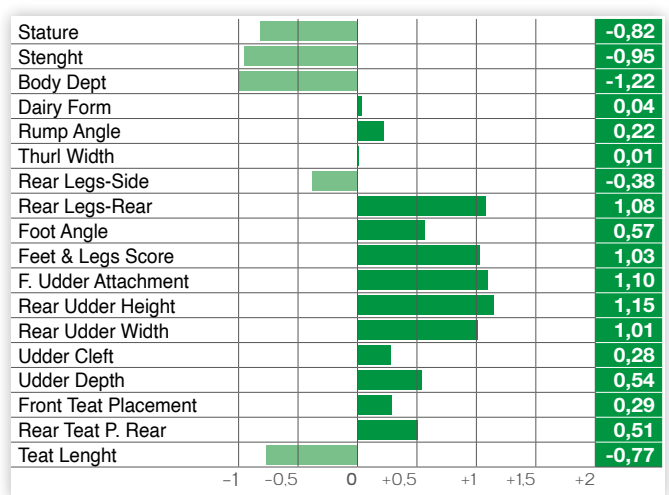
Milk	% Fat	Fat	% Protein	Protein
<b>+685 lbs</b>	<b>+0,07</b>	<b>+45</b>	<b>+0,08</b>	<b>+43</b>
K Casein <b>BE</b>		Beta Lactoglobuline <b>AA</b>		Beta Casein <b>A1A1</b>

► **HEALTH TRAITS**

SCS	<b>+2,81</b>	SCE	<b>+1,30</b>
PL	<b>+6,10</b>	DCE	<b>+1,80</b>
DPR	<b>+1,00</b>	FI	<b>+1,10</b>

► **TYPE TRAITS**

PTAT **+0,40**    UDC **+1,07**    FLC **+1,28**



**New**ISOLABELLA  
INSEME**ATHOS RED**

IT001991454481 - 543HO00306

IL SEME SESSATO *Made in Italy*  
**FOEMINA**  
Sexed **ULTRA 4M****FREESTYLE-RED**

Gywer x Will Born

X

**GYWER**Luis-Ooh Inseme  
Brillante Red

X

**APPRENTICE**

Luis-Ooh Suning ET

**TPI**  
**+2664****NET MERIT**  
**\$ 717****CHEESE MERIT**  
**\$ 728**

Isolabella Inseme Athos Red

**► PRODUCTION TRAITS (78% REL)**

Milk	% Fat	Fat	% Protein	Protein
<b>+926 lbs</b>	<b>+0,03</b>	<b>+44</b>	<b>+0,01</b>	<b>+33</b>
K Casein <b>AA</b>		Beta Lactoglobuline <b>AA</b>		Beta Casein <b>A1A2</b>

**► HEALTH TRAITS**

SCS	<b>+2,64</b>	SCE	<b>+1,20</b>
PL	<b>+6,50</b>	DCE	<b>+1,60</b>
DPR	<b>+1,50</b>	FI	<b>+1,70</b>

**► TYPE TRAITS**PTAT **+0,52** UDC **+1,13** FLC **+1,05**

Stature					<b>-0,10</b>
Stenght					<b>-0,54</b>
Body Dept					<b>-1,03</b>
Dairy Form					<b>-0,90</b>
Rump Angle					<b>0,13</b>
Thurl Width					<b>-0,78</b>
Rear Legs-Side					<b>-1,38</b>
Rear Legs-Rear					<b>1,12</b>
Foot Angle					<b>1,11</b>
Feet & Legs Score					<b>0,94</b>
F. Udder Attachment					<b>0,99</b>
Rear Udder Height					<b>1,46</b>
Rear Udder Width					<b>0,84</b>
Udder Cleft					<b>0,16</b>
Udder Depth					<b>1,53</b>
Front Teat Placement					<b>0,13</b>
Rear Teat P. Rear					<b>-0,32</b>
Teat Lenght					<b>-0,11</b>

K&L RM  
INSEME**BARONE ROSSO R**

NL000627599682 - 543HO00219 - aAa 342

IL SEME SESSATO *Made in Italy*  
**FOEMINA**  
Sexed **ULTRA 4M****SANTORIUS**

Jedi x Kingboy

X

**BREAKER**

K&amp;L RM Soraya

X

**BREKEM**

Saga

**TPI**  
**+2552****NET MERIT**  
**\$ 445****CHEESE MERIT**  
**\$ 460**

K&amp;L RM Inseme Barone Rosso

**► PRODUCTION TRAITS (81% REL)**

Milk	% Fat	Fat	% Protein	Protein
<b>+1014 lbs</b>	<b>+0,03</b>	<b>+47</b>	<b>+0,07</b>	<b>+51</b>
K Casein <b>BB</b>		Beta Lactoglobuline <b>AA</b>		Beta Casein <b>A1A2</b>

**► HEALTH TRAITS**

SCS	<b>+2,85</b>	SCE	<b>+2,10</b>
PL	<b>+1,30</b>	DCE	<b>+2,40</b>
DPR	<b>-1,10</b>	FI	<b>-0,70</b>

**► TYPE TRAITS**PTAT **+1,53** UDC **+1,42** FLC **+0,26**

Stature					<b>1,01</b>
Stenght					<b>0,87</b>
Body Dept					<b>0,66</b>
Dairy Form					<b>0,35</b>
Rump Angle					<b>-1,30</b>
Thurl Width					<b>0,54</b>
Rear Legs-Side					<b>-0,86</b>
Rear Legs-Rear					<b>0,49</b>
Foot Angle					<b>1,20</b>
Feet & Legs Score					<b>0,42</b>
F. Udder Attachment					<b>2,18</b>
Rear Udder Height					<b>2,31</b>
Rear Udder Width					<b>1,90</b>
Udder Cleft					<b>0,47</b>
Udder Depth					<b>1,48</b>
Front Teat Placement					<b>-0,54</b>
Rear Teat P. Rear					<b>-0,46</b>
Teat Lenght					<b>1,80</b>



Pradazzo Rosy Red



Polled

BAS FARM INSEME

# KING RED PR

IT001991441926 - 543HO00292 - aAa 135

IL SEME SESSATO *Made in Italy*  
**FOEMINA**  
Sexed **ULTRA 4M**



Bas Farm Inseme Red King PR ET

**GIO P RF**

Gywer x Lighter

**GYWER**

Weh 22611

**KERRIGAN**

Weh Jacky

**TPI**  
**+2736**

**NET MERIT**  
**\$ 699**

**CHEESE MERIT**  
**\$ 714**

► **PRODUCTION TRAITS** (78% REL)

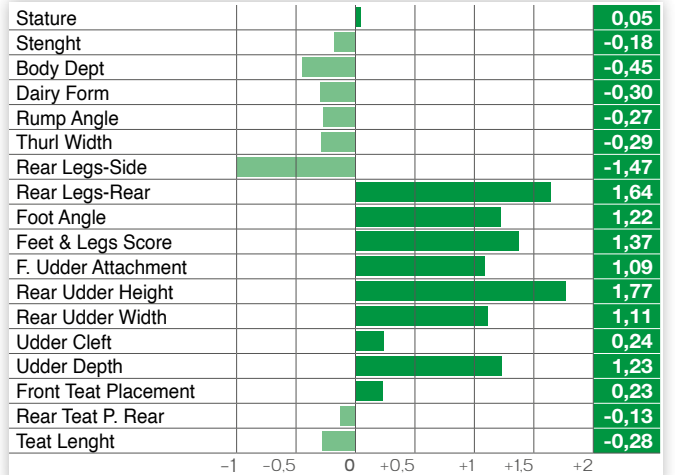
Milk	% Fat	Fat	% Protein	Protein
<b>+934 lbs</b>	<b>+0,05</b>	<b>+50</b>	<b>+0,05</b>	<b>+44</b>
K Casein <b>AA</b>		Beta Lactoglobuline <b>AA</b>		Beta Casein <b>A2A2</b>

► **HEALTH TRAITS**

SCS	<b>+2,70</b>	SCE	<b>+1,40</b>
PL	<b>+4,80</b>	DCE	<b>+2,00</b>
DPR	<b>+1,70</b>	FI	<b>+1,80</b>

► **TYPE TRAITS**

PTAT **+0,98** UDC **+1,20** FLC **+1,48**



ISOLABELLA INSEME

# RITMO RF

IT001991322672 - 543HO00271 - aAa 243

IL SEME SESSATO *Made in Italy*  
**FOEMINA**  
Sexed **ULTRA 4M**



Isolabella Inseme Ritmo RF

**RONALD RF**

Salvatore x Silver

**ACHIEVER**

Luis-Ooh Perrotta

**DOORSOPEN**

De Crob Rita 0077  
B+82

**TPI**  
**+2592**

**NET MERIT**  
**\$ 543**

**CHEESE MERIT**  
**\$ 556**

► **PRODUCTION TRAITS** (81% REL)

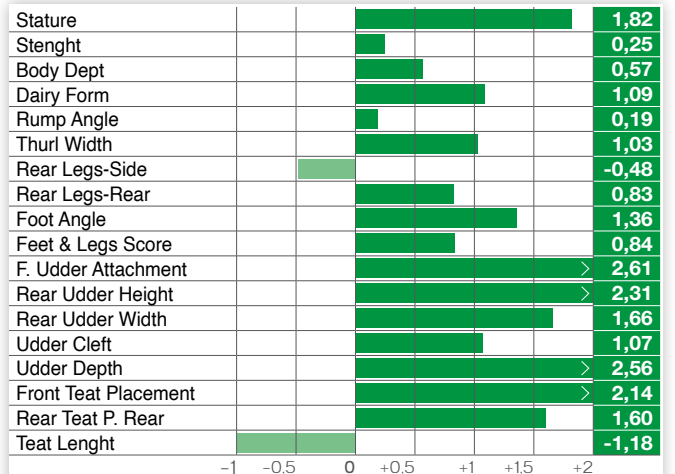
Milk	% Fat	Fat	% Protein	Protein
<b>+617 lbs</b>	<b>+0,12</b>	<b>+57</b>	<b>+0,05</b>	<b>+34</b>
K Casein <b>BB</b>		Beta Lactoglobuline <b>AB</b>		Beta Casein <b>A1A2</b>

► **HEALTH TRAITS**

SCS	<b>+2,79</b>	SCE	<b>+2,00</b>
PL	<b>+3,00</b>	DCE	<b>+2,70</b>
DPR	<b>-1,40</b>	FI	<b>-0,90</b>

► **TYPE TRAITS**

PTAT **+1,44** UDC **+1,81** FLC **+0,51**



**Polled**

AIMONETTA  
INSEME

# SOGNO ROSSO PR

IT006990129591 - 543HO00246 - aAa 234

IL SEME SESSATO *Made in Italy*  
**FOEMINA**  
Sexed **ULTRA 4M**



Aimonetta Inseme Sogno Rosso

**LUCKY**

Jax P x Mogul

**KINGBOY**

Lesperron Kingboy  
Santana MB85

**NUMERO UNO**

Josey-Llc Sangaria  
MB85

**TPI**  
**+2292**

**NET MERIT**  
**\$ 293**

**CHEESE MERIT**  
**\$ 310**

**PRODUCTION TRAITS (82% REL)**

Milk	% Fat	Fat	% Protein	Protein
<b>-120 lbs</b>	<b>+0,09</b>	<b>+20</b>	<b>+0,07</b>	<b>+15</b>
K Casein <b>AB</b>		Beta Lactoglobuline <b>AB</b>		Beta Casein <b>A2A2</b>

**HEALTH TRAITS**

SCS	<b>+2,67</b>	SCE	<b>+1,90</b>
PL	<b>+2,60</b>	DCE	<b>+2,10</b>
DPR	<b>-0,20</b>	FI	<b>+0,20</b>



Bocfarm Sogno Rosso Fiamma Red

**TYPE TRAITS**

PTAT **+0,71** UDC **+0,86** FLC **+0,22**

Stature					<b>1,23</b>
Stenght					<b>0,62</b>
Body Dept					<b>0,64</b>
Dairy Form					<b>0,40</b>
Rump Angle					<b>0,98</b>
Thurl Width					<b>0,56</b>
Rear Legs-Side					<b>-0,35</b>
Rear Legs-Rear					<b>0,22</b>
Foot Angle					<b>0,63</b>
Feet & Legs Score					<b>0,53</b>
F. Udder Attachment					<b>1,29</b>
Rear Udder Height					<b>1,50</b>
Rear Udder Width					<b>0,45</b>
Udder Cleft					<b>0,60</b>
Udder Depth					<b>1,45</b>
Front Teat Placement					<b>0,26</b>
Rear Teat P. Rear					<b>0,17</b>
Teat Lenght					<b>0,12</b>

**Polled**

DEL SANTO  
INSEME

# WALLY RED PR

IT098990790444 - 543HO00282 - aAa 423

IL SEME SESSATO *Made in Italy*  
**FOEMINA**  
Sexed **ULTRA 4M**



Del Santo Inseme Wally Red P

**SOLITAIR P**

Mr Salvatore x Balisto

**ABI RED PP**

Del Santo Barletta  
MB88

**IMPRESSION**

Del Santo Saila EX90

**TPI**  
**+2644**

**NET MERIT**  
**\$ 683**

**CHEESE MERIT**  
**\$ 693**

**PRODUCTION TRAITS (80% REL)**

Milk	% Fat	Fat	% Protein	Protein
<b>+962 lbs</b>	<b>+0,11</b>	<b>+69</b>	<b>+0,06</b>	<b>+46</b>
K Casein <b>BB</b>		Beta Lactoglobuline <b>AA</b>		Beta Casein <b>A2A2</b>

**HEALTH TRAITS**

SCS	<b>+3,01</b>	SCE	<b>+1,60</b>
PL	<b>+3,20</b>	DCE	<b>+2,10</b>
DPR	<b>-2,20</b>	FI	<b>-1,40</b>



**TYPE TRAITS**

PTAT **+1,15** UDC **+1,28** FLC **+0,97**

Stature					<b>0,31</b>
Stenght					<b>-0,10</b>
Body Dept					<b>0,10</b>
Dairy Form					<b>1,38</b>
Rump Angle					<b>0,34</b>
Thurl Width					<b>0,62</b>
Rear Legs-Side					<b>1,25</b>
Rear Legs-Rear					<b>1,09</b>
Foot Angle					<b>0,52</b>
Feet & Legs Score					<b>1,00</b>
F. Udder Attachment					<b>1,60</b>
Rear Udder Height					<b>1,72</b>
Rear Udder Width					<b>1,66</b>
Udder Cleft					<b>0,34</b>
Udder Depth					<b>0,89</b>
Front Teat Placement					<b>0,31</b>
Rear Teat P. Rear					<b>0,09</b>
Teat Lenght					<b>-0,43</b>

# GTPI PROVEN TOP 10

Naab Code	Name	A2A2	KBB	TPI	NM\$	Milk (lbs)	Fat (lbs)	Fat %	Prot. (lbs)	Prot. %	CFP	SCS	PL	DPR	SCE	LIV	GL	FI	PTAT	UDC	FLC	Teat Length
543H000216	BERNINI	A2A2	AA	2668	690	544	63	0,15	28	0,04	91	2,60	4,70	-0,50	2,10	1,40	-1,90	0,00	1,26	1,75	0,45	-1,20
543H000086	SOUND SYSTEM	A1A1	BE	2640	563	1291	81	0,11	46	0,02	127	2,98	1,00	-1,50	3,00	-2,10	-2,50	-0,90	1,74	1,26	-0,08	0,30
543H000163	LIVER	A2A2	BB	2628	623	1389	40	-0,05	44	0,00	84	2,66	3,60	2,00	2,00	0,20	0,20	1,80	0,81	1,17	-0,14	0,80
543H000194	EDUARDO	A2A2	AA	2622	545	991	38	0,00	34	0,01	72	2,57	4,10	2,70	2,10	-0,40	-1,50	2,80	1,09	1,14	-0,14	-0,20
543H000199	GIORDANO	A1A2	AB	2595	555	436	71	0,19	36	0,08	107	2,62	2,30	-0,30	2,30	-1,10	-0,30	-0,20	0,97	0,99	-0,25	-0,40
543H000157	MARZEMINO	A1A2	AB	2586	492	896	61	0,09	34	0,02	95	2,87	1,60	0,80	2,40	-2,00	-2,50	1,20	1,39	1,32	-0,14	0,60
543H000185	NIVEN	A1A2	BB	2577	493	1227	74	0,09	49	0,04	123	3,02	0,20	-1,80	2,20	-3,90	-1,60	-1,00	1,54	1,29	-0,25	1,30
543H000209	HABITUS	A1A2	BE	2569	477	910	50	0,05	37	0,03	87	2,90	2,50	-1,30	2,10	-2,40	-2,30	-1,10	2,34	2,23	0,42	-1,30
543H000116	HIGGINS	A2A2	AB	2563	557	961	76	0,13	45	0,05	121	2,88	2,10	-1,80	1,80	0,80	-2,20	-1,60	0,59	0,55	0,06	0,50
543H000166	MUNARI	A1A2	AA	2562	389	579	54	0,11	40	0,08	94	2,96	-0,80	-2,20	2,00	-3,30	-0,60	-1,30	1,70	2,09	1,98	-1,10

USDA 12/2022

## Proven Sires

Proven sires are those with minimum 30 daughters effective **productive, reproductive, conformation and functional performances** have been measured in at least 30 herds having at least 120 dim.

**They have a minimum reliability equal to 80%.**



CERESIO  
INSEME

# ANTANI

**BRASILEIRO**

Balisto x Epic

**LOCHINVAR**

Ceresio Winnie B+84

**WYMAN**

Ceresio Winter MB88

**TPI**  
**+2525**

**NET MERIT**  
**\$ 472**

**CHEESE MERIT**  
**\$ 485**

► **PRODUCTION TRAITS** based on 1486 daughters in 490 herds (90% REL)

Milk	% Fat	Fat	% Protein	Protein
<b>+268 lbs</b>	<b>+0,19</b>	<b>+64</b>	<b>+0,08</b>	<b>+30</b>
K Casein <b>BB</b>		Beta Lactoglobuline <b>AB</b>		Beta Casein <b>A1A2</b>

► **HEALTH TRAITS**

SCS	<b>+2,93</b>	SCE	<b>+1,70</b>
PL	<b>+1,30</b>	DCE	<b>+2,00</b>
DPR	<b>+0,00</b>	FI	<b>-0,20</b>



IT012990080053 - 543HO00172 - aAa 231456

IL SEME SESSATO *Made in Italy*  
**FOEMINA**  
Sexed **ULTRA**



► **TYPE TRAITS**

PTAT **+1,30** UDC **+1,01** FLC **+1,08**

Stature					<b>0,93</b>
Stenght					<b>0,13</b>
Body Dept					<b>1,12</b>
Dairy Form					<b>1,87</b>
Rump Angle					<b>-0,31</b>
Thurl Width					<b>0,81</b>
Rear Legs-Side					<b>1,37</b>
Rear Legs-Rear					<b>1,03</b>
Foot Angle					<b>0,62</b>
Feet & Legs Score					<b>1,34</b>
F. Udder Attachment					<b>0,86</b>
Rear Udder Height					<b>1,85</b>
Rear Udder Width					<b>1,48</b>
Udder Cleft					<b>1,07</b>
Udder Depth					<b>0,49</b>
Front Teat Placement					<b>1,75</b>
Rear Teat P. Rear					<b>1,50</b>
Teat Length					<b>1,42</b>

GO-FARM

# BERNINI

**GUARANTEE**

Boastful x Tango

**HOTROD**

Go-Farm-Bomba MB85

**MCCUTCHEN**

Go-Farm Brashine EX91

**TPI**  
**+2668**

**NET MERIT**  
**\$ 690**

**CHEESE MERIT**  
**\$ 705**

► **PRODUCTION TRAITS** based on 82 daughters in 36 herds (86% REL)

Milk	% Fat	Fat	% Protein	Protein
<b>+544 lbs</b>	<b>+0,15</b>	<b>+63</b>	<b>+0,04</b>	<b>+28</b>
K Casein <b>AA</b>		Beta Lactoglobuline <b>AB</b>		Beta Casein <b>A2A2</b>

► **HEALTH TRAITS**

SCS	<b>+2,60</b>	SCE	<b>+2,10</b>
PL	<b>+4,70</b>	DCE	<b>+2,70</b>
DPR	<b>-0,50</b>	FI	<b>+0,00</b>



IT019991728770 - 543HO00216 - aAa 234

IL SEME SESSATO *Made in Italy*  
**FOEMINA**  
Sexed **ULTRA 4M**



► **TYPE TRAITS**

PTAT **+1,26** UDC **+1,75** FLC **+0,45**

Stature					<b>1,07</b>
Stenght					<b>-0,66</b>
Body Dept					<b>-0,68</b>
Dairy Form					<b>0,61</b>
Rump Angle					<b>-0,69</b>
Thurl Width					<b>0,77</b>
Rear Legs-Side					<b>0,62</b>
Rear Legs-Rear					<b>0,11</b>
Foot Angle					<b>0,71</b>
Feet & Legs Score					<b>0,80</b>
F. Udder Attachment					<b>2,37</b>
Rear Udder Height					<b>1,88</b>
Rear Udder Width					<b>1,53</b>
Udder Cleft					<b>1,32</b>
Udder Depth					<b>2,63</b>
Front Teat Placement					<b>0,76</b>
Rear Teat P. Rear					<b>0,51</b>
Teat Length					<b>-1,15</b>

GO-FARM

## BRAMANTE

## SOUND SYSTEM

Silver x Supersire

## HOTROD

Go-Farm-Bank

## MCCUTCHEN

Go-Farm Brashine  
EX91TPI  
**+2556**NET MERIT  
**\$ 469**CHEESE MERIT  
**\$ 482**

## ▶ PRODUCTION TRAITS based on 905 daughters in 271 herds (89% REL)

Milk	% Fat	Fat	% Protein	Protein
<b>+780 lbs</b>	<b>+0,11</b>	<b>+62</b>	<b>+0,05</b>	<b>+40</b>
K Casein <b>AE</b>		Beta Lactoglobuline <b>AA</b>		Beta Casein <b>A1A2</b>

## ▶ HEALTH TRAITS

SCS	<b>+2,81</b>	SCE	<b>+2,30</b>
PL	<b>+1,60</b>	DCE	<b>+1,80</b>
DPR	<b>-1,90</b>	FI	<b>-1,30</b>



IT019991671675 - 543HO00204 - aAa 243

 IL SEME SESSATO *Made in Italy*  
**FOEMINA**  
 Sexed **ULTRA 4M**


## ▶ TYPE TRAITS

PTAT **+1,47** UDC **+1,36** FLC **-0,13**

Stature	>	2,72
Stenght		0,53
Body Dept		0,84
Dairy Form		1,44
Rump Angle		1,60
Thurl Width		0,88
Rear Legs-Side		0,89
Rear Legs-Rear		0,31
Foot Angle		1,49
Feet & Legs Score		0,45
F. Udder Attachment	>	2,05
Rear Udder Height		1,75
Rear Udder Width		1,58
Udder Cleft		1,61
Udder Depth	>	2,60
Front Teat Placement		1,41
Rear Teat P. Rear		1,80
Teat Lenght		-1,16

IDEVRA  
ROYAL

## GIORDANO

## PERSEUS

Penmanship x Doorman

## RODANAS

Idevra Royal Grinta  
MB88

## AGENCY

Gal-Farm Goga

TPI  
**+2595**NET MERIT  
**\$ 555**CHEESE MERIT  
**\$ 576**

## ▶ PRODUCTION TRAITS based on 878 daughters in 277 herds (89% REL)

Milk	% Fat	Fat	% Protein	Protein
<b>+436 lbs</b>	<b>+0,19</b>	<b>+71</b>	<b>+0,08</b>	<b>+36</b>
K Casein <b>AB</b>		Beta Lactoglobuline <b>AA</b>		Beta Casein <b>A1A2</b>

## ▶ HEALTH TRAITS

SCS	<b>+2,62</b>	SCE	<b>+2,30</b>
PL	<b>+2,30</b>	DCE	<b>+2,30</b>
DPR	<b>-0,30</b>	FI	<b>-0,20</b>



IT019991621646 - 543HO00199 - aAa 135

 IL SEME SESSATO *Made in Italy*  
**FOEMINA**  
 Sexed **ULTRA 4M**


## ▶ TYPE TRAITS

PTAT **+0,97** UDC **+0,99** FLC **-0,25**

Stature		1,59
Stenght		0,81
Body Dept		0,92
Dairy Form		1,06
Rump Angle		-0,72
Thurl Width		1,36
Rear Legs-Side		0,29
Rear Legs-Rear		0,06
Foot Angle		1,26
Feet & Legs Score		0,04
F. Udder Attachment		0,99
Rear Udder Height		0,96
Rear Udder Width		1,19
Udder Cleft	>	2,15
Udder Depth		1,51
Front Teat Placement		1,89
Rear Teat P. Rear	>	2,25
Teat Lenght		-0,36



CIRIO AGR.  
EQUITY GAP

# EDUARDO

IT061990821887 - 543HO00194 - aAa 234

## PERSEUS

Penmanship  
x Doorman

## BATTLECRY

Cirio Agricola Ermione  
GP84

## CASHMONEY

Cirio Agricola Elettra  
MB88 EXMS

**TPI**  
**+2622**

**NET MERIT**  
**\$ 545**

**CHEESE MERIT**  
**\$ 557**



Cirio Agr. Equity Gap Eduardo

### PRODUCTION TRAITS based on 238 daughters in 73 herds (88% REL)

Milk	% Fat	Fat	% Protein	Protein
<b>+991 lbs</b>	<b>+0,00</b>	<b>+38</b>	<b>+0,01</b>	<b>+34</b>
K Casein <b>AA</b>		Beta Lactoglobuline <b>AA</b>		Beta Casein <b>A2A2</b>

### HEALTH TRAITS

SCS	<b>+2,57</b>	SCE	<b>+2,10</b>
PL	<b>+4,10</b>	DCE	<b>+1,90</b>
DPR	<b>+2,70</b>	FI	<b>+2,80</b>



### TYPE TRAITS

PTAT **+1,09** UDC **+1,14** FLC **-0,14**

Stature					<b>1,23</b>
Stenght					<b>0,46</b>
Body Dept					<b>0,42</b>
Dairy Form					<b>0,36</b>
Rump Angle					<b>0,33</b>
Thurl Width					<b>0,08</b>
Rear Legs-Side					<b>-1,30</b>
Rear Legs-Rear					<b>0,03</b>
Foot Angle					<b>1,34</b>
Feet & Legs Score					<b>0,12</b>
F. Udder Attachment					<b>1,47</b>
Rear Udder Height					<b>1,16</b>
Rear Udder Width					<b>1,26</b>
Udder Cleft					<b>1,13</b>
Udder Depth					<b>1,68</b>
Front Teat Placement					<b>0,92</b>
Rear Teat P. Rear					<b>0,62</b>
Teat Lenght					<b>-0,17</b>

-1 -0,5 0 +0,5 +1 +1,5 +2

PESS FARM  
PERSEUS

# FALETTI

IT004991763908 - 543HO00197 - aAa 243



## PERSEUS

Penmanship x Doorman

## MARDI GRAS

Pess Farm Mardi Gras  
Umina EX90

## EUDON

Pess Farm Eudon  
Spagnola B+84

**TPI**  
**+2410**

**NET MERIT**  
**\$ 392**

**CHEESE MERIT**  
**\$ 403**



Pess Farm Perseus Faletti

### PRODUCTION TRAITS based on 427 daughters in 127 herds (90% REL)

Milk	% Fat	Fat	% Protein	Protein
<b>+348 lbs</b>	<b>0,06</b>	<b>+30</b>	<b>+0,06</b>	<b>+29</b>
K Casein <b>AB</b>		Beta Lactoglobuline <b>AA</b>		Beta Casein <b>A2A2</b>

### HEALTH TRAITS

SCS	<b>+2,97</b>	SCE	<b>+1,60</b>
PL	<b>+1,60</b>	DCE	<b>+1,50</b>
DPR	<b>+1,70</b>	FI	<b>+1,80</b>



Pess Farm Faletti Dalia

### TYPE TRAITS

PTAT **+0,53** UDC **+0,88** FLC **-0,01**

Stature					<b>0,00</b>
Stenght					<b>-0,37</b>
Body Dept					<b>-0,79</b>
Dairy Form					<b>-0,57</b>
Rump Angle					<b>0,71</b>
Thurl Width					<b>-0,05</b>
Rear Legs-Side					<b>-2,45</b>
Rear Legs-Rear					<b>0,02</b>
Foot Angle					<b>1,58</b>
Feet & Legs Score					<b>0,01</b>
F. Udder Attachment					<b>1,43</b>
Rear Udder Height					<b>0,50</b>
Rear Udder Width					<b>0,29</b>
Udder Cleft					<b>0,55</b>
Udder Depth					<b>1,66</b>
Front Teat Placement					<b>0,75</b>
Rear Teat P. Rear					<b>-0,13</b>
Teat Lenght					<b>-0,68</b>

-1 -0,5 0 +0,5 +1 +1,5 +2

A-L-H

# HABITUS

NI000562148420 - 543HO00209

 IL SOGGETTO *Made in Italy*  
**FOEMINA**  
 Sexed **ULTRA 4M**
**PHARO**

Jedi x Balisto

X

**SILVER**

A-L-H Havanna

X

**SUPERSIRE**Cookiecutter Ssire  
Have MB86
**TPI**  
**+2569**
**NET MERIT**  
**\$ 477**
**CHEESE MERIT**  
**\$ 485**
**► PRODUCTION TRAITS** based on 139 daughters in 58 herds (86% REL)

Milk	% Fat	Fat	% Protein	Protein
<b>+910 lbs</b>	<b>+0,05</b>	<b>+50</b>	<b>+0,03</b>	<b>+37</b>
K Casein <b>BE</b>		Beta Lactoglobuline <b>AB</b>		Beta Casein <b>A1A2</b>

**► HEALTH TRAITS**

SCS	<b>+2,90</b>	SCE	<b>+2,10</b>
PL	<b>+2,50</b>	DCE	<b>+2,70</b>
DPR	<b>-1,30</b>	FI	<b>-1,10</b>



A-L-H Habitus

**► TYPE TRAITS**
**PTAT +2,34 UDC +2,23 FLC +0,42**

Stature	>	2,70
Stenght		0,83
Body Dept		1,21
Dairy Form	>	2,11
Rump Angle		0,35
Thurl Width		0,99
Rear Legs-Side		0,15
Rear Legs-Rear		0,43
Foot Angle		1,56
Feet & Legs Score		1,07
F. Udder Attachment	>	2,98
Rear Udder Height	>	3,15
Rear Udder Width	>	2,81
Udder Cleft		1,88
Udder Depth	>	2,68
Front Teat Placement		1,77
Rear Teat P. Rear		1,84
Teat Lenght		-1,32

BALLOTTINO

# HIGGINS

IT019991587216 - 543HO00116 - aAa 234

**VANHALEN**

Montross x Mccutchen

X

**SUPERSIRE**

Ballottino Farm Carmen

X

**MILLION**Ballottino Farm Fiera  
B+83
**TPI**  
**+2563**
**NET MERIT**  
**\$ 557**
**CHEESE MERIT**  
**\$ 568**
**► PRODUCTION TRAITS** based on 145 daughters in 73 herds (88% REL)

Milk	% Fat	Fat	% Protein	Protein
<b>+961 lbs</b>	<b>+0,13</b>	<b>+76</b>	<b>+0,05</b>	<b>+45</b>
K Casein <b>AB</b>		Beta Lactoglobuline <b>AA</b>		Beta Casein <b>A2A2</b>

**► HEALTH TRAITS**

SCS	<b>+2,88</b>	SCE	<b>+1,80</b>
PL	<b>+2,10</b>	DCE	<b>+2,20</b>
DPR	<b>-1,80</b>	FI	<b>-1,60</b>



Ballottino Farm Supersire Carmen

**► TYPE TRAITS**
**PTAT +0,59 UDC +0,55 FLC +0,06**

Stature		0,51
Stenght		0,30
Body Dept		0,37
Dairy Form		1,16
Rump Angle		0,47
Thurl Width		0,57
Rear Legs-Side		-0,05
Rear Legs-Rear		0,13
Foot Angle		-1,00
Feet & Legs Score		0,25
F. Udder Attachment		0,96
Rear Udder Height		1,07
Rear Udder Width		0,95
Udder Cleft		0,37
Udder Depth		0,33
Front Teat Placement		-0,22
Rear Teat P. Rear		-1,30
Teat Lenght		0,45



# PRISMAGEN **LIVER**

DE000360385506 - 543HO00163 - aAa 234



**SUPERHERO** x **MISSOURI** x **NUMERO UNO**  
 Supershot x Numero Uno x Pg Ladylike MB86 x Hlm Lane MB85

<b>TPI</b> <b>+2628</b>	<b>NET MERIT</b> <b>\$ 623</b>	<b>CHEESE MERIT</b> <b>\$ 631</b>
----------------------------	-----------------------------------	--------------------------------------



► **PRODUCTION TRAITS** based on 933 daughters in 246 herds (90% REL)

Milk	% Fat	Fat	% Protein	Protein
<b>+1389 lbs</b>	<b>-0,05</b>	<b>+40</b>	<b>+0,00</b>	<b>+44</b>
K Casein <b>BB</b>		Beta Lactoglobuline <b>AB</b>		Beta Casein <b>A2A2</b>

► **TYPE TRAITS**

PTAT **+0,81** UDC **+1,17** FLC **-0,14**

► **HEALTH TRAITS**

SCS	<b>+2,66</b>	SCE	<b>+2,00</b>
PL	<b>+3,60</b>	DCE	<b>+2,30</b>
DPR	<b>+2,00</b>	FI	<b>+1,80</b>

Stature											<b>0,02</b>
Stenght											<b>-0,50</b>
Body Dept											<b>-0,39</b>
Dairy Form											<b>0,27</b>
Rump Angle											<b>-1,95</b>
Thurl Width											<b>0,89</b>
Rear Legs-Side											<b>1,42</b>
Rear Legs-Rear											<b>-0,81</b>
Foot Angle											<b>-0,53</b>
Feet & Legs Score											<b>0,16</b>
F. Udder Attachment											<b>&gt; 2,10</b>
Rear Udder Height											<b>1,28</b>
Rear Udder Width											<b>1,09</b>
Udder Cleft											<b>0,01</b>
Udder Depth											<b>1,37</b>
Front Teat Placement											<b>-0,75</b>
Rear Teat P. Rear											<b>-0,43</b>
Teat Lenght											<b>0,84</b>



# GARIONI SOUND **MARZEMINO**

IT019991673056 - 543HO00157 - aAa 231



**SOUND SYSTEM** x **KINGBOY** x **FREDDIE**  
 Silver x Supersire x Garioni Royal KB Maelyn MB87 x Morningview Freddie Mimi EX90

<b>TPI</b> <b>+2586</b>	<b>NET MERIT</b> <b>\$ 492</b>	<b>CHEESE MERIT</b> <b>\$ 498</b>
----------------------------	-----------------------------------	--------------------------------------



► **PRODUCTION TRAITS** based on 449 daughters in 152 herds (89% REL)

Milk	% Fat	Fat	% Protein	Protein
<b>+896 lbs</b>	<b>+0,09</b>	<b>+61</b>	<b>+0,02</b>	<b>+34</b>
K Casein <b>AB</b>		Beta Lactoglobuline <b>AA</b>		Beta Casein <b>A1A2</b>

► **TYPE TRAITS**

PTAT **+1,39** UDC **+1,32** FLC **-0,14**

► **HEALTH TRAITS**

SCS	<b>+2,87</b>	SCE	<b>+2,40</b>
PL	<b>+1,60</b>	DCE	<b>+2,10</b>
DPR	<b>+0,80</b>	FI	<b>+1,20</b>

Stature											<b>1,58</b>
Stenght											<b>0,91</b>
Body Dept											<b>1,02</b>
Dairy Form											<b>1,09</b>
Rump Angle											<b>-0,13</b>
Thurl Width											<b>1,47</b>
Rear Legs-Side											<b>0,86</b>
Rear Legs-Rear											<b>0,21</b>
Foot Angle											<b>0,96</b>
Feet & Legs Score											<b>0,18</b>
F. Udder Attachment											<b>1,49</b>
Rear Udder Height											<b>&gt; 2,24</b>
Rear Udder Width											<b>1,81</b>
Udder Cleft											<b>1,09</b>
Udder Depth											<b>1,08</b>
Front Teat Placement											<b>1,02</b>
Rear Teat P. Rear											<b>0,90</b>
Teat Lenght											<b>0,62</b>



GANDY ROYAL  
MEDALIST

## MEDALIST

## SUPERSHOT

Supersire x Super

## MCCUTCHEN

Gandy Ludmilla GP83

## PLANET

Gandy Planet  
Lady Gaga GP81TPI  
**+2328**NET MERIT  
**\$ 393**CHEESE MERIT  
**\$ 394**

## ► PRODUCTION TRAITS based on 1171 daughters in 320 herds (90% REL)

Milk	% Fat	Fat	% Protein	Protein
<b>+1147 lbs</b>	<b>-0,05</b>	<b>+30</b>	<b>+0,02</b>	<b>+40</b>
K Casein <b>AE</b>		Beta Lactoglobuline <b>AB</b>		Beta Casein <b>A1A2</b>

## ► HEALTH TRAITS

SCS	<b>+3,08</b>	SCE	<b>+1,90</b>
PL	<b>+1,60</b>	DCE	<b>+1,60</b>
DPR	<b>-0,30</b>	FI	<b>-0,30</b>

IT020991065090 - 543HO00102 - aAa 432



## ► TYPE TRAITS

PTAT **+0,22** UDC **+0,45** FLC **-0,69**

Stature	-0,14
Stenght	0,38
Body Dept	0,21
Dairy Form	0,16
Rump Angle	-0,06
Thurl Width	1,04
Rear Legs-Side	1,62
Rear Legs-Rear	-0,94
Foot Angle	-0,33
Feet & Legs Score	-0,54
F. Udder Attachment	0,62
Rear Udder Height	0,53
Rear Udder Width	0,92
Udder Cleft	0,56
Udder Depth	-0,42
Front Teat Placement	0,52
Rear Teat P. Rear	0,74
Teat Lenght	-0,95

GANDY  
INSEME

## MONZON

## HOTROD

Jerod x Iota

## MCCUTCHEN

Gandy Ludmilla B+83

## PLANET

Gandy Planet  
Lady Gaga B+81TPI  
**+2512**NET MERIT  
**\$ 420**CHEESE MERIT  
**\$ 424**

## ► PRODUCTION TRAITS based on 195 daughters in 47 herds (89% REL)

Milk	% Fat	Fat	% Protein	Protein
<b>+1326 lbs</b>	<b>+0,02</b>	<b>+56</b>	<b>+0,02</b>	<b>+48</b>
K Casein <b>AA</b>		Beta Lactoglobuline <b>BB</b>		Beta Casein <b>A2A2</b>

## ► HEALTH TRAITS

SCS	<b>+3,02</b>	SCE	<b>+2,30</b>
PL	<b>+0,50</b>	DCE	<b>+2,20</b>
DPR	<b>-1,90</b>	FI	<b>-1,00</b>

IT020991130892 - 543HO00145 - aAa 324165



## ► TYPE TRAITS

PTAT **+1,60** UDC **+0,80** FLC **-0,27**

Stature	3,34
Stenght	1,71
Body Dept	1,89
Dairy Form	1,67
Rump Angle	0,37
Thurl Width	1,22
Rear Legs-Side	0,49
Rear Legs-Rear	0,98
Foot Angle	1,08
Feet & Legs Score	0,27
F. Udder Attachment	1,34
Rear Udder Height	1,09
Rear Udder Width	1,81
Udder Cleft	1,79
Udder Depth	1,73
Front Teat Placement	1,02
Rear Teat P. Rear	1,51
Teat Lenght	-0,42



GANDY INS

# MOONDANCE

IT020991130893 - 543HO00152 - aAa 234165



Gandy Ins Moondance

**HOTROD**

Jerod x Iota

**MCCUTCHEN**

Gandy Ludmilla B+83

**PLANET**

Gandy Planet Lady  
Gaga B+81

**TPI**  
**+2389**

**NET MERIT**  
**\$ 315**

**CHEESE MERIT**  
**\$ 306**

► **PRODUCTION TRAITS** based on 975 daughters in 311 herds (90% REL)

Milk	% Fat	Fat	% Protein	Protein
<b>+1981 lbs</b>	<b>-0,16</b>	<b>+29</b>	<b>-0,04</b>	<b>+50</b>
K Casein <b>AA</b>		Beta Lactoglobuline <b>BB</b>		Beta Casein <b>A2A2</b>

► **HEALTH TRAITS**

SCS	<b>+3,15</b>	SCE	<b>+2,20</b>
PL	<b>+0,40</b>	DCE	<b>+2,20</b>
DPR	<b>-2,40</b>	FI	<b>-1,50</b>



New Flowers Farm Hametisty VG86

► **TYPE TRAITS**

**PTAT +1,55 UDC +1,21 FLC +0,18**

Stature	>	2,74
Stenght		0,91
Body Dept		1,23
Dairy Form		1,60
Rump Angle		1,51
Thurl Width		1,62
Rear Legs-Side		-0,56
Rear Legs-Rear		1,08
Foot Angle		1,17
Feet & Legs Score		0,63
F. Udder Attachment		1,84
Rear Udder Height		1,66
Rear Udder Width	>	2,26
Udder Cleft		1,59
Udder Depth		1,81
Front Teat Placement		1,67
Rear Teat P. Rear		1,74
Teat Lenght		-1,87

GANDY INS

# MOONWALK

IT020991130896 - 543HO00138 - aAa 423615



Portis Moonwalk Carolina

**HOTROD**

Jerod x Iota

**MCCUTCHEN**

Gandy Ludmilla B+83

**PLANET**

Gandy Planet Lady  
Gaga B+81

**TPI**  
**+2384**

**NET MERIT**  
**\$ 328**

**CHEESE MERIT**  
**\$ 326**

► **PRODUCTION TRAITS** based on 139 daughters in 73 herds (89% REL)

Milk	% Fat	Fat	% Protein	Protein
<b>+1164 lbs</b>	<b>-0,10</b>	<b>+17</b>	<b>-0,01</b>	<b>+33</b>
K Casein <b>AA</b>		Beta Lactoglobuline <b>AB</b>		Beta Casein <b>A2A2</b>

► **HEALTH TRAITS**

SCS	<b>+3,02</b>	SCE	<b>+2,40</b>
PL	<b>+1,30</b>	DCE	<b>+2,20</b>
DPR	<b>-0,20</b>	FI	<b>+0,50</b>



► **TYPE TRAITS**

**PTAT +1,31 UDC +1,06 FLC +0,57**

Stature	>	2,18
Stenght		0,59
Body Dept		0,86
Dairy Form		0,90
Rump Angle		0,43
Thurl Width		0,73
Rear Legs-Side		-0,67
Rear Legs-Rear		1,55
Foot Angle		1,41
Feet & Legs Score		0,81
F. Udder Attachment		1,56
Rear Udder Height		1,21
Rear Udder Width		1,69
Udder Cleft		1,84
Udder Depth		1,60
Front Teat Placement		1,36
Rear Teat P. Rear		1,14
Teat Lenght		-1,11

# GO-FARM MUNARI

IT019991671551 - 543HO00166 - aAa 234



Go-Farm Munari

**HOTLINE** x **DOZER** x **SNOWMASTER**  
 Hotrod x Mogul x Go-Farm Mestalla EX90 x Marci 7716 MB87

**TPI** +2562      **NET MERIT** \$ 389      **CHEESE MERIT** \$ 402

► **PRODUCTION TRAITS** based on 613 daughters in 180 herds (90% REL)

Milk	% Fat	Fat	% Protein	Protein
<b>+579 lbs</b>	<b>+0,11</b>	<b>+54</b>	<b>+0,08</b>	<b>+40</b>
K Casein <b>AA</b>		Beta Lactoglobuline <b>AB</b>		Beta Casein <b>A1A2</b>

► **HEALTH TRAITS**

SCS	<b>+2,96</b>	SCE	<b>+2,00</b>
PL	<b>-0,80</b>	DCE	<b>+2,40</b>
DPR	<b>-2,20</b>	FI	<b>-1,30</b>

► **TYPE TRAITS**

PTAT **+1,70** UDC **+2,09** FLC **+1,98**

Stature					<b>0,83</b>
Stenght					<b>0,55</b>
Body Dept					<b>0,54</b>
Dairy Form					<b>0,75</b>
Rump Angle					<b>-0,72</b>
Thurl Width					<b>-0,09</b>
Rear Legs-Side					<b>-1,41</b>
Rear Legs-Rear					<b>&gt; 3,11</b>
Foot Angle					<b>&gt; 2,27</b>
Feet & Legs Score					<b>1,72</b>
F. Udder Attachment					<b>&gt; 2,26</b>
Rear Udder Height					<b>&gt; 2,95</b>
Rear Udder Width					<b>&gt; 2,91</b>
Udder Cleft					<b>0,91</b>
Udder Depth					<b>1,35</b>
Front Teat Placement					<b>1,13</b>
Rear Teat P. Rear					<b>1,17</b>
Teat Lenght					<b>-1,08</b>

# R DG NEUTRON

NL000715951660 - 543HO00167 - aAa 231465



Neutron

**CHARLEY** x **POWERBALL** x **NUMERO UNO**  
 Supershot x Mogul x R DG Noa x Tir-An N.U.Nyala MB86

**TPI** +2528      **NET MERIT** \$ 487      **CHEESE MERIT** \$ 493

► **PRODUCTION TRAITS** based on 3098 daughters in 758 herds (90% REL)

Milk	% Fat	Fat	% Protein	Protein
<b>+1699 lbs</b>	<b>-0,15</b>	<b>+20</b>	<b>+0,01</b>	<b>+57</b>
K Casein <b>BB</b>		Beta Lactoglobuline <b>AA</b>		Beta Casein <b>A2A2</b>

► **HEALTH TRAITS**

SCS	<b>+2,86</b>	SCE	<b>+1,90</b>
PL	<b>+2,10</b>	DCE	<b>+1,50</b>
DPR	<b>+0,90</b>	FI	<b>+1,00</b>

► **TYPE TRAITS**

PTAT **+1,12** UDC **+0,93** FLC **+0,25**

Stature					<b>1,85</b>
Stenght					<b>-0,13</b>
Body Dept					<b>0,17</b>
Dairy Form					<b>1,33</b>
Rump Angle					<b>0,50</b>
Thurl Width					<b>1,32</b>
Rear Legs-Side					<b>1,01</b>
Rear Legs-Rear					<b>0,11</b>
Foot Angle					<b>0,41</b>
Feet & Legs Score					<b>0,82</b>
F. Udder Attachment					<b>1,23</b>
Rear Udder Height					<b>1,24</b>
Rear Udder Width					<b>1,33</b>
Udder Cleft					<b>1,49</b>
Udder Depth					<b>1,17</b>
Front Teat Placement					<b>1,18</b>
Rear Teat P. Rear					<b>1,51</b>
Teat Lenght					<b>0,19</b>



Krisma Neutron Laurie V687

ZANI SOUND SYSTEM **NIVEN**

IT017991891820 - 543HO00185 - aAa 234



**SOUND SYSTEM** **OCTAVIAN** **MASSEY**  
 Silver x Supersire x Zani Octavian Noemy MB88 x Zani Massey Cecilia EX91

**TPI** +2577 **NET MERIT** \$ 493 **CHEESE MERIT** \$ 500

► **PRODUCTION TRAITS** based on 584 daughters in 190 herds (89% REL)

Milk	% Fat	Fat	% Protein	Protein
<b>+1227 lbs</b>	<b>+0,09</b>	<b>+74</b>	<b>+0,04</b>	<b>+49</b>
K Casein <b>BB</b>		Beta Lactoglobuline <b>AB</b>		Beta Casein <b>A1A2</b>

► **HEALTH TRAITS**

SCS	<b>+3,02</b>	SCE	<b>+2,20</b>
PL	<b>+0,20</b>	DCE	<b>+2,60</b>
DPR	<b>-1,80</b>	FI	<b>-1,00</b>



► **TYPE TRAITS**

PTAT **+1,54** UDC **+1,29** FLC **-0,25**

Stature	>	2,24
Stenght		1,32
Body Dept		1,36
Dairy Form		1,70
Rump Angle		-0,35
Thurl Width		1,24
Rear Legs-Side		1,39
Rear Legs-Rear		-0,16
Foot Angle		0,77
Feet & Legs Score		0,38
F. Udder Attachment		1,58
Rear Udder Height	>	2,59
Rear Udder Width	>	2,01
Udder Cleft		1,32
Udder Depth		1,35
Front Teat Placement		-0,05
Rear Teat P. Rear		0,60
Teat Lenght		1,34

FANTASY ALLMEI **SHARPE**

IT001990871408 - 543HO00087 - aAa 234156



**1STCLASS** **EPIC** **HAYDEN**  
 Numero Uno x Dorcy x Sepia MB85 x Sabrin 192 MB85

**TPI** +2426 **NET MERIT** \$ 406 **CHEESE MERIT** \$ 404

► **PRODUCTION TRAITS** based on 2626 daughters in 652 herds (92% REL)

Milk	% Fat	Fat	% Protein	Protein
<b>+1386 lbs</b>	<b>-0,06</b>	<b>+37</b>	<b>-0,03</b>	<b>+33</b>
K Casein <b>BE</b>		Beta Lactoglobuline <b>AA</b>		Beta Casein <b>A1A2</b>

► **HEALTH TRAITS**

SCS	<b>+2,87</b>	SCE	<b>+2,00</b>
PL	<b>+1,40</b>	DCE	<b>+3,10</b>
DPR	<b>-1,90</b>	FI	<b>-1,80</b>



► **TYPE TRAITS**

PTAT **+1,08** UDC **+2,09** FLC **+0,64**

Stature		0,68
Stenght		-0,88
Body Dept		-0,62
Dairy Form		0,84
Rump Angle		> 2,02
Thurl Width		-0,59
Rear Legs-Side		0,11
Rear Legs-Rear		0,76
Foot Angle		0,79
Feet & Legs Score		0,73
F. Udder Attachment		> 2,14
Rear Udder Height	>	2,95
Rear Udder Width		1,51
Udder Cleft		1,30
Udder Depth		> 2,38
Front Teat Placement		0,36
Rear Teat P. Rear		0,83
Teat Lenght		-0,10

ALL NURE SECRETARIAT

# SECRETARIAT

IT033990287543 - 543HO00020 - aAa 324



Secretariat

**NUMERO UNO**

**BAXTER**

**GOLDWYN**

Man-Oman x Shottle

Blitz x Mtoto

James x Storm

**TPI**  
**+2089**

**NET MERIT**  
**\$ 7**

**CHEESE MERIT**  
**\$ 16**

**PRODUCTION TRAITS (94% REL)**

Milk	% Fat	Fat	% Protein	Protein
<b>-431 lbs</b>	<b>+0,01</b>	<b>-14</b>	<b>+0,03</b>	<b>-4</b>
K Casein <b>AB</b>		Beta Lactoglobuline <b>AB</b>		Beta Casein <b>A2A2</b>

**HEALTH TRAITS**

SCS	<b>+2,83</b>	SCE	<b>+2,60</b>
PL	<b>+1,30</b>	DCE	<b>+1,80</b>
DPR	<b>+0,10</b>	FI	<b>+0,00</b>



All Nure Secretariat EX 95

**TYPE TRAITS**

PTAT **+1,49** UDC **+1,79** FLC **+0,52**

Stature					<b>0,97</b>
Stenght					<b>0,40</b>
Body Dept					<b>0,60</b>
Dairy Form					<b>0,70</b>
Rump Angle					<b>0,88</b>
Thurl Width					<b>1,61</b>
Rear Legs-Side					<b>-0,16</b>
Rear Legs-Rear					<b>0,05</b>
Foot Angle					<b>0,72</b>
Feet & Legs Score					<b>0,87</b>
F. Udder Attachment					<b>1,33</b>
Rear Udder Height					<b>&gt; 2,83</b>
Rear Udder Width					<b>&gt; 2,32</b>
Udder Cleft					<b>&gt; 2,32</b>
Udder Depth					<b>1,42</b>
Front Teat Placement					<b>0,07</b>
Rear Teat P. Rear					<b>1,01</b>
Teat Length					<b>1,41</b>

MIRABELL

# SOUND SYSTEM

IT017991512628 - 543HO00086 - aAa 234156



Sound System

**SILVER**

**SUPERSIRE**

**SHOTTLE**

Mogul x Snowman

Mirabell Ssire Shana MB87

Mirabell Nizza EX90

**TPI**  
**+2640**

**NET MERIT**  
**\$ 563**

**CHEESE MERIT**  
**\$ 567**

**PRODUCTION TRAITS based on 6672 daughters in 1302 herds (94% REL)**

Milk	% Fat	Fat	% Protein	Protein
<b>+1291 lbs</b>	<b>+0,11</b>	<b>+81</b>	<b>+0,02</b>	<b>+46</b>
K Casein <b>BE</b>		Beta Lactoglobuline <b>AA</b>		Beta Casein <b>A1A1</b>

**HEALTH TRAITS**

SCS	<b>+2,98</b>	SCE	<b>+3,00</b>
PL	<b>+1,00</b>	DCE	<b>+2,20</b>
DPR	<b>-1,50</b>	FI	<b>-0,90</b>



Isoabella S.System Carolina VG89

**TYPE TRAITS**

PTAT **+1,74** UDC **+1,26** FLC **-0,08**

Stature					<b>&gt; 2,38</b>
Stenght					<b>1,26</b>
Body Dept					<b>1,81</b>
Dairy Form					<b>&gt; 2,48</b>
Rump Angle					<b>0,33</b>
Thurl Width					<b>1,25</b>
Rear Legs-Side					<b>1,76</b>
Rear Legs-Rear					<b>0,37</b>
Foot Angle					<b>0,70</b>
Feet & Legs Score					<b>0,51</b>
F. Udder Attachment					<b>1,30</b>
Rear Udder Height					<b>&gt; 2,69</b>
Rear Udder Width					<b>&gt; 2,25</b>
Udder Cleft					<b>0,93</b>
Udder Depth					<b>0,81</b>
Front Teat Placement					<b>0,97</b>
Rear Teat P. Rear					<b>1,16</b>
Teat Length					<b>0,27</b>





GARIONI  
ROYAL

# VANHALEN

IT019991363560 - 543HO00067 - aAa 324561



**MONTROSS**

Mogul x Bolton

x

**MCCUTCHEN**

Sonray-Acres Mcthn  
B+84

x

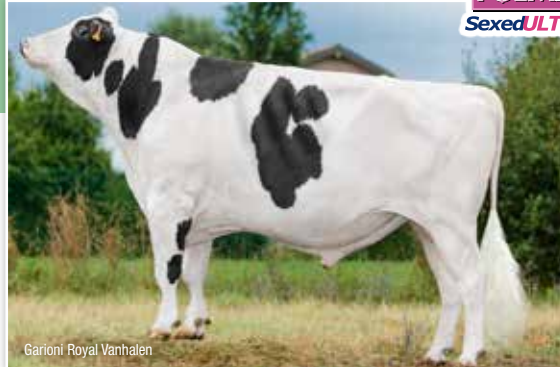
**OBSERVER**

Sonray-Acres Soc  
Observr

**TPI**  
**+2467**

**NET MERIT**  
**\$ 391**

**CHEESE MERIT**  
**\$ 397**



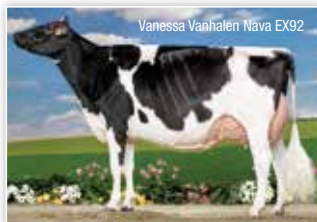
Garioni Royal Vanhalen

► **PRODUCTION TRAITS** based on 11998 daughters in 2125 herds (94% REL)

Milk	% Fat	Fat	% Protein	Protein
<b>+1046 lbs</b>	<b>+0,03</b>	<b>+48</b>	<b>+0,02</b>	<b>+38</b>
K Casein <b>AB</b>		Beta Lactoglobuline <b>AA</b>		Beta Casein <b>A2A2</b>

► **HEALTH TRAITS**

SCS	<b>+2,89</b>	SCE	<b>+1,90</b>
PL	<b>+1,30</b>	DCE	<b>+2,20</b>
DPR	<b>-1,80</b>	FI	<b>-1,50</b>



Vanessa Vanhalen Nava EX92

► **TYPE TRAITS**

PTAT **+1,32** UDC **+1,30** FLC **+0,96**

Stature					<b>0,64</b>
Stenght					<b>0,71</b>
Body Dept					<b>0,74</b>
Dairy Form					<b>1,15</b>
Rump Angle					<b>-0,74</b>
Thurl Width					<b>0,56</b>
Rear Legs-Side					<b>-1,43</b>
Rear Legs-Rear					<b>1,29</b>
Foot Angle					<b>1,24</b>
Feet & Legs Score					<b>0,99</b>
F. Udder Attachment					<b>1,92</b>
Rear Udder Height					<b>&gt; 2,06</b>
Rear Udder Width					<b>1,99</b>
Udder Cleft					<b>-0,09</b>
Udder Depth					<b>1,04</b>
Front Teat Placement					<b>-0,16</b>
Rear Teat P. Rear					<b>-1,33</b>
Teat Lenght					<b>-0,73</b>



# THE PERFECT PARTNERSHIP



Continues to pass 90% gender accuracy allowing the farmer to feel confident in producing female progeny from the very best of the herd.

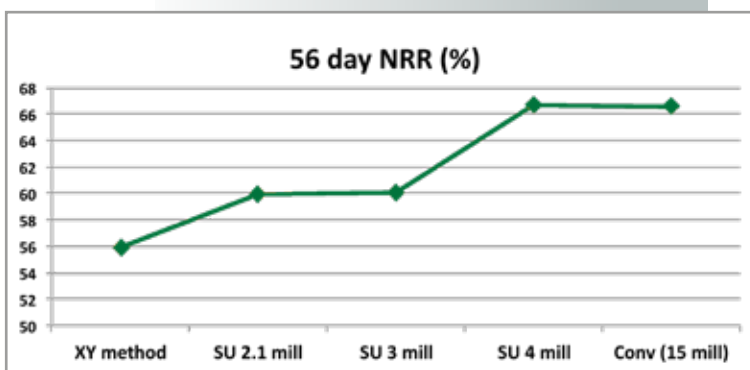
Maximise the value of every beef pregnancy by selecting proven **CBI** bulls to suit your farm system.

**SexedULTRA 4M™**  
THE MOST ADVANCED SEX-SORTED SEMEN...

**INSEME  
BEEF IMPACT**

**PROVEN, PROGENY TESTED, BEEF SIRES**

Inseme's Beef Impact encompasses real on-farm data which is aimed at UK Dairy farmers wanting to select beef sires that will suit their system for Ease of Management and added Market Value. This maximises productivity and profitability of the dairy herd by allowing customers to identify proven quality bulls who are specialists for desired traits.





*italian style*

ediprima  
genetics

December  
2022

INSEME

